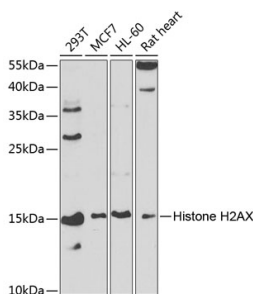


Anti-Histone H2A.X Antibody (A13852)

Specifications:

Name:	Anti-Histone H2A.X Antibody
Description:	Rabbit polyclonal antibody to Histone H2A.X.
Applications:	WB, IHC, ICC/IF
Recommended Dilutions:	WB: 1:500-1:1,000, IHC: 1:50-1:100, ICC/IF: 1:50-1:100
Reactivity:	Human, Mouse, Rat
Immunogen:	A synthetic phosphorylated peptide around S2 of human Histone H2AX (NP_002096.1).
Sequence:	MSGRG
Host:	Rabbit
Clonality:	Polyclonal
Isotype:	IgG
Conjugate:	Unconjugated
Purification:	Affinity purification.
Molecular Weight:	15 kDa
Product Form:	Liquid
Formulation:	Supplied in Phosphate Buffered Saline, pH 7.3, with 50% Glycerol and 0.02% Sodium Azide.
Storage:	Shipped at 4°C. Upon delivery aliquot and store at -20°C. Avoid freeze / thaw cycles.
Disclaimer:	This product is for research use only. It is not intended for diagnostic or therapeutic use.

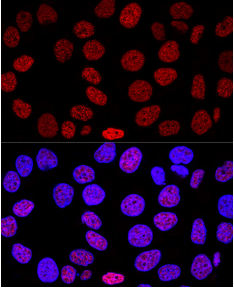
Images:



Western blot analysis of extracts of various cell lines, using Anti-Histone H2A.X Antibody (A13852) at 1:1,000 dilution. The secondary antibody was Goat Anti-Rabbit IgG H&L Antibody (HRP) at 1:10,000 dilution. Lysates/proteins were present at 25µg per lane. The blocking buffer used was 3% non-fat dry milk in TBST. Detection was with a ECL Basic Kit. Exposure time: 90s.

Anti-Histone H2A.X Antibody (A13852)

Images continued:



Confocal immunofluorescence analysis of HeLa cells using Anti-Histone H2A.X Antibody (A13852) at a dilution of 1:200. DAPI was used to stain the cell nuclei (blue).