

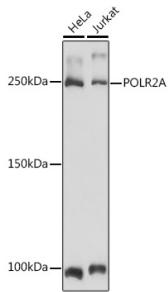
Anti-RNA polymerase II CTD repeat YSPTSPS Antibody (A13875)

Specifications:

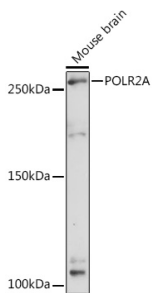
Name:	Anti-RNA polymerase II CTD repeat YSPTSPS Antibody
Description:	Rabbit polyclonal antibody to RNA polymerase II CTD repeat YSPTSPS.
Applications:	WB, ICC/IF, IP
Recommended Dilutions:	WB: 1:500-1:2,000, ICC/IF: 1:50-1:200, IP: 1:500-1:1,000
Reactivity:	Human, Mouse, Rat
Immunogen:	Recombinant fusion protein containing a sequence corresponding to amino acids 1135-1311 of human POLR2A (NP_000928.1).
Sequence:	KTPSLTVFLLGQSARDAERAkdILCRLEHTTLRKVTANTAIYYDPNPQSTVVAEDQEW VNVYYEMPDFDVARISPWLLRVELDRKHMTDRKLTMEQIAEKINAGFGDDLNCIFNDD NAEKLVLIRIMNSDENKMQEEEEVVDKMDDDVFLRCIESNMLTDMTLQGIEQISKVY MHL
Host:	Rabbit
Clonality:	Polyclonal
Isotype:	IgG
Conjugate:	Unconjugated
Purification:	Affinity purification.
Molecular Weight:	250 kDa
Product Form:	Liquid
Formulation:	Supplied in Phosphate Buffered Saline, pH 7.3, with 50% Glycerol and 0.01% Thiomersal.
Storage:	Shipped at 4°C. Upon delivery aliquot and store at -20°C. Avoid freeze / thaw cycles.
Disclaimer:	This product is for research use only. It is not intended for diagnostic or therapeutic use.

Anti-RNA polymerase II CTD repeat YSPTSPS Antibody (A13875)

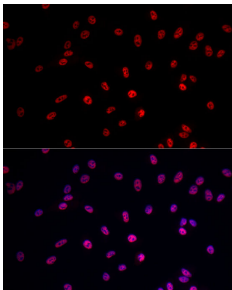
Images:



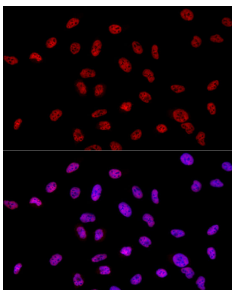
Western blot analysis of extracts of various cell lines, using Anti-RNA polymerase II CTD repeat YSPTSPS Antibody (A13875) at 1:3,000 dilution. The secondary antibody was Goat Anti-Rabbit IgG H&L Antibody (HRP) at 1:10,000 dilution. Lysates/proteins were present at 25µg per lane. The blocking buffer used was 3% non-fat dry milk in TBST. Detection was with a ECL Basic Kit. Exposure time: 1s.



Western blot analysis of extracts of Mouse brain, using Anti-RNA polymerase II CTD repeat YSPTSPS Antibody (A13875) at 1:3,000 dilution. The secondary antibody was Goat Anti-Rabbit IgG H&L Antibody (HRP) at 1:10,000 dilution. Lysates/proteins were present at 25µg per lane. The blocking buffer used was 3% non-fat dry milk in TBST. Detection was with a ECL Basic Kit. Exposure time: 30s.



Immunofluorescence analysis of A-549 cells using Anti-RNA polymerase II CTD repeat YSPTSPS Antibody (A13875) at a dilution of 1:100 (40x lens). DAPI was used to stain the cell nuclei (blue).



Immunofluorescence analysis of HeLa cells using Anti-RNA polymerase II CTD repeat YSPTSPS Antibody (A13875) at a dilution of 1:100 (40x lens). DAPI was used to stain the cell nuclei (blue).