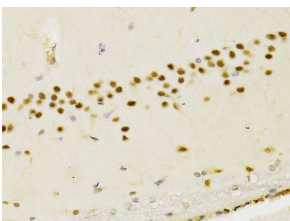


Anti-PTEN Antibody (A13881)

Specifications:

Name:	Anti-PTEN Antibody
Description:	Rabbit polyclonal antibody to PTEN.
Applications:	IHC, ICC/IF
Recommended Dilutions:	IHC: 1:50-1:200, ICC/IF: 1:50-1:200
Reactivity:	Human, Mouse, Rat
Immunogen:	Recombinant fusion protein containing a sequence corresponding to amino acids 190-304 of human PTEN (NP_000305.3).
Sequence:	PVALLFHKMMFETIPMFSGGTCNPQFVVCQLKVKIYSSNSGPTRREDKFMYFEFPQPL PVCQDIKVEFFHKQNKMLKKDKMFHFWNTFFIPGPEETSEKVENGSLCDQEIDSIC
Host:	Rabbit
Clonality:	Polyclonal
Isotype:	IgG
Conjugate:	Unconjugated
Purification:	Affinity purification.
Product Form:	Liquid
Formulation:	Supplied in Phosphate Buffered Saline, pH 7.3, with 50% Glycerol and 0.02% Sodium Azide.
Storage:	Shipped at 4°C. Upon delivery aliquot and store at -20°C. Avoid freeze / thaw cycles.
Disclaimer:	This product is for research use only. It is not intended for diagnostic or therapeutic use.

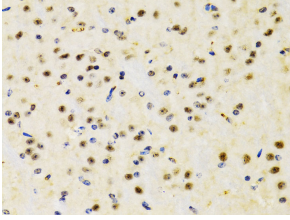
Images:



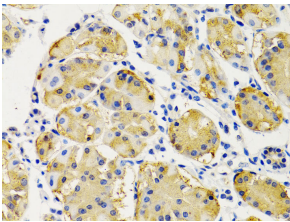
Immunohistochemistry analysis of paraffin-embedded rat brain using Anti-PTEN Antibody (A13881) at a dilution of 1:200 (40x lens). Perform microwave antigen retrieval with 10 mM PBS buffer pH 7.2 before commencing with IHC staining protocol.

Anti-PTEN Antibody (A13881)

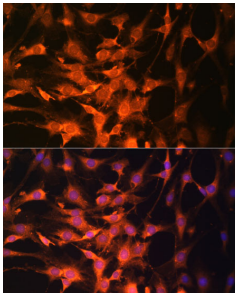
Images continued:



Immunohistochemistry analysis of paraffin-embedded mouse brain using Anti-PTEN Antibody (A13881) at a dilution of 1:200 (40x lens). Perform microwave antigen retrieval with 10 mM PBS buffer pH 7.2 before commencing with IHC staining protocol.



Immunohistochemistry analysis of paraffin-embedded human stomach using Anti-PTEN Antibody (A13881) at a dilution of 1:200 (40x lens). Perform microwave antigen retrieval with 10 mM PBS buffer pH 7.2 before commencing with IHC staining protocol.



Immunofluorescence analysis of C6 cells using Anti-PTEN Antibody (A13881) at a dilution of 1:100. DAPI was used to stain the cell nuclei (blue).