

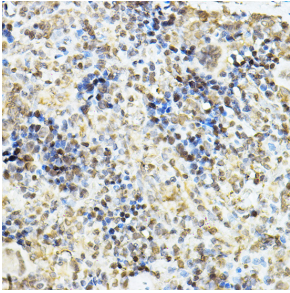
Anti-Glucocorticoid Receptor Antibody (A13924)

Specifications:

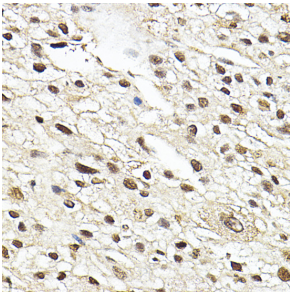
Name:	Anti-Glucocorticoid Receptor Antibody
Description:	Rabbit polyclonal antibody to Glucocorticoid Receptor.
Applications:	WB, IHC, ICC/IF
Recommended Dilutions:	WB: 1:500-1:2,000, IHC: 1:50-1:200, ICC/IF: 1:50-1:200
Reactivity:	Human, Mouse, Rat
Immunogen:	Recombinant fusion protein containing a sequence corresponding to amino acids 1-280 of human Glucocorticoid Receptor (NP_001191194.1).
Sequence:	MDSKESLTPGREENPSSVLAQERGDVMDFYKTLRGGATVKVSASSPSLAVASQSDSKQ RRLLVDFPKGSVSNAQQPDLSKAVSLSMGLYMGETETKVMGNDLGFPQQGQISLSSGE TDLKLEESIANLNRSTSVPENPKSSASTAVSAAPEKEFPKTHSDVSSEQQHLKGQT GTNGGNVKLYTTDQSTFDILQDLEFSSGSPGKETNESPWRSDLLIDENCLLSPLAGED DSFLLEGNSNEDCKPLILPDTKPKIKDNGDLVLSSPSNVTLTPQVKTEK
Host:	Rabbit
Clonality:	Polyclonal
Isotype:	IgG
Conjugate:	Unconjugated
Purification:	Affinity purification.
Molecular Weight:	105 kDa
Product Form:	Liquid
Formulation:	Supplied in Phosphate Buffered Saline, pH 7.3, with 50% Glycerol and 0.01% Thiomersal.
Storage:	Shipped at 4°C. Upon delivery aliquot and store at -20°C. Avoid freeze / thaw cycles.
Disclaimer:	This product is for research use only. It is not intended for diagnostic or therapeutic use.

Anti-Glucocorticoid Receptor Antibody (A13924)

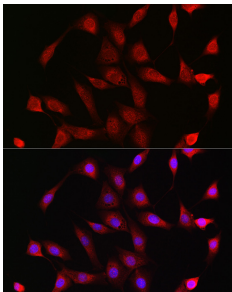
Images:



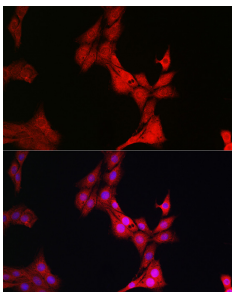
Immunohistochemistry analysis of paraffin-embedded rat spleen using Anti-Glucocorticoid Receptor Antibody (A13924) at a dilution of 1:100 (40x lens). Perform high pressure antigen retrieval with 10 mM citrate buffer pH 6.0 before commencing with IHC staining protocol.



Immunohistochemistry analysis of paraffin-embedded human liver cancer using Anti-Glucocorticoid Receptor Antibody (A13924) at a dilution of 1:100 (40x lens). Perform high pressure antigen retrieval with 10 mM citrate buffer pH 6.0 before commencing with IHC staining protocol.



Immunofluorescence analysis of NIH/3T3 cells using Anti-Glucocorticoid Receptor Antibody (A13924) at a dilution of 1:200 (40x lens). DAPI was used to stain the cell nuclei (blue).



Immunofluorescence analysis of PC-12 cells using Anti-Glucocorticoid Receptor Antibody (A13924) at a dilution of 1:200 (40x lens). DAPI was used to stain the cell nuclei (blue).