

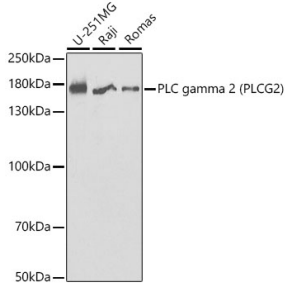
## Anti-PLCG 2 Antibody (A13937)

### Specifications:

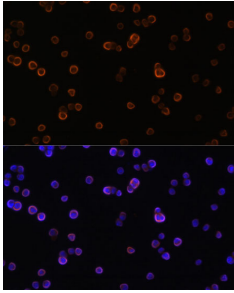
Name:	Anti-PLCG 2 Antibody
Description:	Rabbit polyclonal antibody to PLCG 2.
Applications:	WB, ICC/IF
Recommended Dilutions:	WB: 1:500-1:2,000, ICC/IF: 1:20-1:100
Reactivity:	Human, Mouse
Immunogen:	Recombinant fusion protein containing a sequence corresponding to amino acids 1-300 of human PLC gamma 2 (PLC gamma 2 (PLCG2)) (NP_002652.2).
Sequence:	MSTTVNVDSLAEYEKSQLKRALELGTVMVFVFRKSTPERRTVQVIMETRQVAWSKTA DKIEGFLDIMEIKEIRPGKNSKDFERAKAVRQKEDCCFTILYGTQFVLSTLSLAADSK EDAVNWLSGLKILHQEAMNASTPTIIESWLRKQIYSVDQTRRNSISLRELKILPLIN FKVSSAKFLKDKFVEIGA HKDELSFEQFHLFYK KLMFEQQKSILDEFKKDSSVFILGN TDRPDASAVYLHDFQRFLIHEQQEHWAQDLNKVRRERMTKFIDDTMRETAEPFLFVDEF LTYLFSRENS
Host:	Rabbit
Clonality:	Polyclonal
Isotype:	IgG
Conjugate:	Unconjugated
Purification:	Affinity purification.
Molecular Weight:	175 kDa
Product Form:	Liquid
Formulation:	Supplied in Phosphate Buffered Saline, pH 7.3, with 50% Glycerol and 0.01% Thiomersal.
Storage:	Shipped at 4°C. Upon delivery aliquot and store at -20°C. Avoid freeze / thaw cycles.
Disclaimer:	This product is for research use only. It is not intended for diagnostic or therapeutic use.

## Anti-PLCG 2 Antibody (A13937)

### Images:



Western blot analysis of extracts of various cell lines, using Anti-PLCG 2 Antibody (A13937) at 1:1,000 dilution. The secondary antibody was Goat Anti-Rabbit IgG H&L Antibody (HRP) at 1:10,000 dilution. Lysates/proteins were present at 25µg per lane. The blocking buffer used was 3% non-fat dry milk in TBST.



Immunofluorescence analysis of Raw264.7 cells using Anti-PLCG 2 Antibody (A13937) at a dilution of 1:100. DAPI was used to stain the cell nuclei (blue).