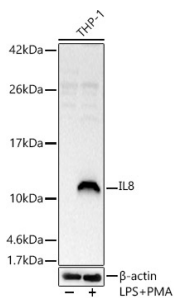


Anti-IL-8 Antibody (A14047)

Specifications:

Name:	Anti-IL-8 Antibody
Description:	Rabbit polyclonal antibody to IL-8.
Applications:	WB
Recommended Dilutions:	WB: 1:500-1:1,000
Reactivity:	Human
Immunogen:	A synthetic peptide corresponding to a sequence within amino acids 1-99 of human IL8 (NP_000575.1).
Sequence:	MTSKLAVALLAAFLISAALCEGAVLPRSAKELRCQCICKTYSKPFHPKFIKELRVIESG PHCANTEIIVKLSDGRELCLDPKENWVQRVVEKFLKRAENS
Host:	Rabbit
Clonality:	Polyclonal
Isotype:	IgG
Conjugate:	Unconjugated
Purification:	Affinity purification.
Molecular Weight:	11 kDa
Product Form:	Liquid
Formulation:	Supplied in Phosphate Buffered Saline, pH 7.3, with 50% Glycerol and 0.01% Thiomersal.
Storage:	Shipped at 4°C. Upon delivery aliquot and store at -20°C. Avoid freeze / thaw cycles.
Disclaimer:	This product is for research use only. It is not intended for diagnostic or therapeutic use.

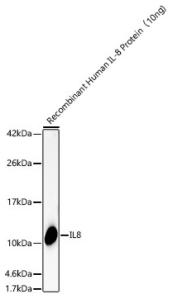
Images:



Western blot analysis of THP-1, using Anti-IL-8 Antibody (A14047) at 1:700 dilution. THP-1 cells were treated by PMA/TPA (80 nM) at 37°C for overnight and LPS (1 µg/ml) at 37°C for 6 hours. The secondary antibody was Goat Anti-Rabbit IgG H&L Antibody (HRP) at 1:10,000 dilution. Lysates/proteins were present at 25µg per lane. The blocking buffer used was 3% non-fat dry milk in TBST. Detection was with a ECL Basic Kit. Exposure time: 180s.

Anti-IL-8 Antibody (A14047)

Images continued:



Western blot analysis of Recombinant Human IL-8 Protein, using Anti-IL-8 Antibody (A14047) at 1:700 dilution. The secondary antibody was Goat Anti-Rabbit IgG H&L Antibody (HRP) at 1:10,000 dilution. Lysates/proteins were present at 25µg per lane. The blocking buffer used was 3% non-fat dry milk in TBST. Detection was with a ECL Basic Kit. Exposure time: 180s.