

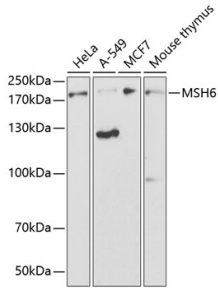
## Anti-MSH6 Antibody (A14392)

### Specifications:

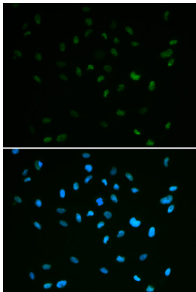
Name:	Anti-MSH6 Antibody
Description:	Rabbit polyclonal antibody to MSH6.
Applications:	WB, ICC/IF
Recommended Dilutions:	WB: 1:500-1:1,000, ICC/IF: 1:50-1:100
Reactivity:	Human, Mouse
Immunogen:	Recombinant fusion protein containing a sequence corresponding to amino acids 1061-1360 of human MSH6 (P52701).
Sequence:	LCLANYSRGGDGPMPVILLPEDTPPFLELKGSRHPCITKTFFGDDFIPNDILIGCE EEEQENGKAYCVLVTGPNMGGKSTLMRQAGLLAVMAQMGCYVPAEVCRLTPIDRVFTR LGASDRIMSGESTFFVELSETASILMHATAHSLVLVDELGRGTATFDGTAIANAVVKE LAETIKCRTLTFSTHYHSLVEDYSQNVAVRLGHMACMVENECEDPSQETITFLYKFIKG ACPKSYGFNAARLANLPEEVIQKGHRKAREFEKMNQSLRLRFREVCLASERSTVDAEAV HKLLTLIKEL
Host:	Rabbit
Clonality:	Polyclonal
Isotype:	IgG
Conjugate:	Unconjugated
Purification:	Affinity purification.
Molecular Weight:	200 kDa
Product Form:	Liquid
Formulation:	Supplied in Phosphate Buffered Saline, pH 7.3, with 50% Glycerol and 0.01% Thiomersal.
Storage:	Shipped at 4°C. Upon delivery aliquot and store at -20°C. Avoid freeze / thaw cycles.
Disclaimer:	This product is for research use only. It is not intended for diagnostic or therapeutic use.

## Anti-MSH6 Antibody (A14392)

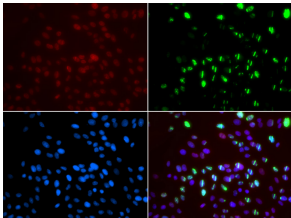
### Images:



Western blot analysis of extracts of various cell lines, using Anti-MSH6 Antibody (A14392) at 1:300 dilution. The secondary antibody was Goat Anti-Rabbit IgG H&L Antibody (HRP) at 1:10,000 dilution. Lysates/proteins were present at 25 $\mu$ g per lane. The blocking buffer used was 3% non-fat dry milk in TBST.



Immunofluorescence analysis of A549 cells using Anti-MSH6 Antibody (A14392). DAPI was used to stain the cell nuclei (blue).



Immunofluorescence analysis of GFP-RNF168 transgenic U2OS cells using Anti-MSH6 Antibody (A14392). Green:GFP-RNF168 fusion protein expression for DNA damage marker. DAPI was used to stain the cell nuclei (blue). RNF168(GFP) can be used to mark cells damaged by UV-A laser for they always gather around DNA damage region.