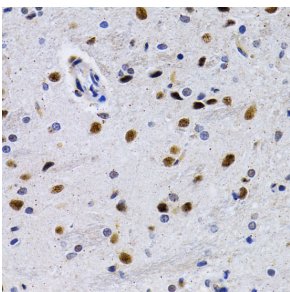


Anti-ID3 Antibody (A14713)

Specifications:

| | |
|------------------------|---|
| Name: | Anti-ID3 Antibody |
| Description: | Rabbit polyclonal antibody to ID3. |
| Applications: | IHC, ICC/IF |
| Recommended Dilutions: | IHC: 1:50-1:200, ICC/IF: 1:50-1:100 |
| Reactivity: | Human, Mouse, Rat |
| Immunogen: | Recombinant fusion protein containing a sequence corresponding to amino acids 1-119 of human ID3 (NP_002158.3). |
| Sequence: | MKALSPVRGCYEAVCCLSERSLAIARGRGKGPAAEEPLSLDDMNHCSRLRELVPGV PRGTQLSQVEILQRVIDYILDQLQVLAEPAPGPPDGPLPIQTAELTPELVISNDKRS FCH |
| Host: | Rabbit |
| Clonality: | Polyclonal |
| Isotype: | IgG |
| Conjugate: | Unconjugated |
| Purification: | Affinity purification. |
| Product Form: | Liquid |
| Formulation: | Supplied in Phosphate Buffered Saline, pH 7.3, with 50% Glycerol and 0.02% Sodium Azide. |
| Storage: | Shipped at 4°C. Upon delivery aliquot and store at -20°C. Avoid freeze / thaw cycles. |
| Disclaimer: | This product is for research use only. It is not intended for diagnostic or therapeutic use. |

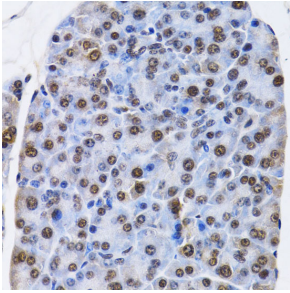
Images:



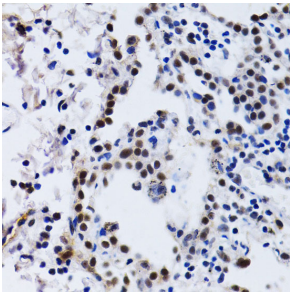
Immunohistochemistry analysis of paraffin-embedded rat brain using Anti-ID3 Antibody (A14713) at a dilution of 1:200 (40x lens). Perform microwave antigen retrieval with 10 mM PBS buffer pH 7.2 before commencing with IHC staining protocol.

Anti-ID3 Antibody (A14713)

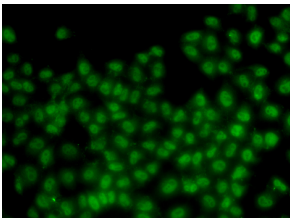
Images continued:



Immunohistochemistry analysis of paraffin-embedded mouse pancreas using Anti-ID3 Antibody (A14713) at a dilution of 1:200 (40x lens). Perform microwave antigen retrieval with 10 mM PBS buffer pH 7.2 before commencing with IHC staining protocol.



Immunohistochemistry analysis of paraffin-embedded human lung cancer using Anti-ID3 Antibody (A14713) at a dilution of 1:200 (40x lens). Perform microwave antigen retrieval with 10 mM PBS buffer pH 7.2 before commencing with IHC staining protocol.



Immunofluorescence analysis of HeLa cells using Anti-ID3 Antibody (A14713).