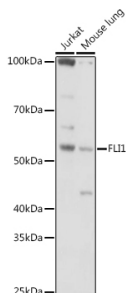


## Anti-FLI1 Antibody (A14879)

### Specifications:

|                        |  |
|------------------------|--|
| Name:                  | Anti-FLI1 Antibody   |
| Description:           | Rabbit polyclonal antibody to FLI1.  |
| Applications:          | WB, IP   |
| Recommended Dilutions: | WB: 1:500-1:1,000, IP: 1:50-1:200  |
| Reactivity:            | Human, Mouse   |
| Immunogen:             | Recombinant fusion protein containing a sequence corresponding to amino acids 1-100 of human FLI1 (NP_002008.2). |
| Sequence:              | MDGTIKEALSVVSDQSLFDSAYGAAAHLPKADMTASGSPDYGQPHKINLPPQQEWI<br>NQPVRVNVKREYDHMNGSRESPVDCSVSKCSKLVGGGESNPM           |
| Host:                  | Rabbit   |
| Clonality:             | Polyclonal   |
| Isotype:               | IgG  |
| Conjugate:             | Unconjugated   |
| Purification:          | Affinity purification.   |
| Molecular Weight:      | 51 kDa   |
| Product Form:          | Liquid   |
| Formulation:           | Supplied in Phosphate Buffered Saline, pH 7.3, with 50% Glycerol and 0.02% Sodium Azide.                         |
| Storage:               | Shipped at 4°C. Upon delivery aliquot and store at -20°C. Avoid freeze / thaw cycles.                            |
| Disclaimer:            | This product is for research use only. It is not intended for diagnostic or therapeutic use.                     |

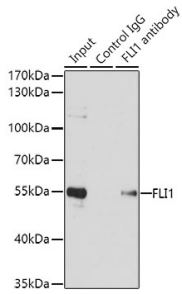
### Images:



Western blot analysis of extracts of various cell lines, using Anti-FLI1 Antibody (A14879) at 1:1,000 dilution. The secondary antibody was Goat Anti-Rabbit IgG H&L Antibody (HRP) at 1:10,000 dilution. Lysates/proteins were present at 25µg per lane. The blocking buffer used was 3% non-fat dry milk in TBST. Detection was with a ECL Basic Kit. Exposure time: 30s.

## Anti-FLI1 Antibody (A14879)

Images continued:



Immunoprecipitation analysis of 200 $\mu$ g extracts of Jurkat cells using 1 $\mu$ g of Anti-FLI1 Antibody (A14879). This Western blot was performed on the immunoprecipitate using Anti-FLI1 Antibody (A14879) at a dilution of 1:1000.