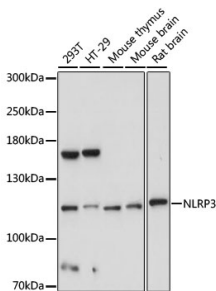


## Anti-NLRP3 Antibody (A14882)

### Specifications:

Name:	Anti-NLRP3 Antibody
Description:	Rabbit polyclonal antibody to NLRP3.
Applications:	WB, IF
Recommended Dilutions:	WB: 1:500-1:2000, IF: 1:50-1:200
Reactivity:	Human, Mouse, Rat
Immunogen:	Recombinant protein of human NLRP3.
Host:	Rabbit
Clonality:	Polyclonal
Isotype:	IgG
Conjugate:	Unconjugated
Purification:	Affinity purification.
Molecular Weight:	118kDa
Formulation:	Supplied in Phosphate Buffered Saline, pH 7.30, with 0.02% Sodium Azide and 50% Glycerol.
Storage:	Shipped at 4°C. Upon delivery aliquot and store at -20°C. Avoid freeze / thaw cycles.
Disclaimer:	This product is for research use only. It is not intended for diagnostic or therapeutic use.

### Images:



Western blot analysis of extracts of various cell lines, using Anti-NLRP3 Antibody (A5652) at 1:1,000 dilution.

Secondary antibody: Goat Anti-Rabbit IgG (H+L) (HRP) (AS014) at 1:10,000 dilution.

Lysates / proteins: 25µg per lane.

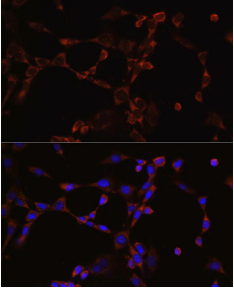
Blocking buffer: 3% non-fat dry milk in TBST.

Detection: ECL Enhanced Kit (RM00021).

Exposure time: 10s.

## Anti-NLRP3 Antibody (A14882)

Images continued:



Immunofluorescence analysis of NIH/3T3 cells using Anti-NLRP3 Antibody (A5652) at dilution of 1:100 (40x lens). Blue: DAPI for nuclear staining.