

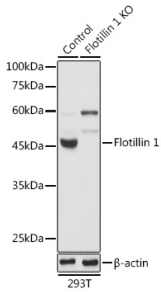
## Anti-Flotillin 1 Antibody (A15114)

### Specifications:

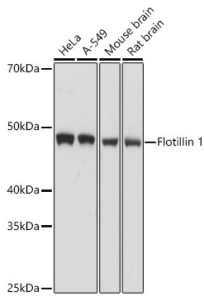
Name:	Anti-Flotillin 1 Antibody
Description:	Rabbit polyclonal antibody to Flotillin 1.
Applications:	WB, IHC, ICC/IF, IP
Recommended Dilutions:	WB: 1:100-1:500, IHC: 1:50-1:200, ICC/IF: 1:50-1:200, IP: 1:500-1:1,000
Reactivity:	Human, Mouse, Rat
Immunogen:	Recombinant fusion protein containing a sequence corresponding to amino acids 155-427 of human Flotillin 1 (NP_005794.1).
Sequence:	HDDQDYLSLHGKARTAQVQKDARIGEAQAKRDAGIREAKAKQEKVSAQYLSEIEMAKA QRDYELKKAAYDIEVNTRRAQADLAYQLQVAKTKQQIEEQRVQVQVVERAQQVAVQEQ EIARREKELEARVRKPAAEAERYKLERLAEAEKSQLIMQAEAEAAASVRMRGEAEFAIG ARARAEAEQMAKKAFAFQLYQEAQQLDMLLEKLPQVAEEISGPLTSANKITLVSSGSG TMGAAKVTGEVLDILTRLPEVERLTGVSISQVNHKPLRTA
Host:	Rabbit
Clonality:	Polyclonal
Isotype:	IgG
Conjugate:	Unconjugated
Purification:	Affinity purification.
Molecular Weight:	47 kDa
Product Form:	Liquid
Formulation:	Supplied in Phosphate Buffered Saline, pH 7.3, with 50% Glycerol and 0.01% Thiomersal.
Storage:	Shipped at 4°C. Upon delivery aliquot and store at -20°C. Avoid freeze / thaw cycles.
Disclaimer:	This product is for research use only. It is not intended for diagnostic or therapeutic use.

## Anti-Flotillin 1 Antibody (A15114)

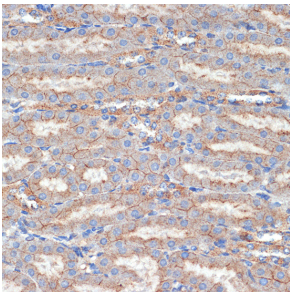
### Images:



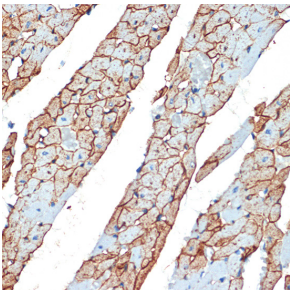
Western blot analysis of extracts from normal (control) and Flotillin 1 knockout (KO) 293T cells, using Anti-Flotillin 1 Antibody (A15114) at 1:1,000 dilution. The secondary antibody was Goat Anti-Rabbit IgG H&L Antibody (HRP) at 1:10,000 dilution. Lysates/proteins were present at 25µg per lane. The blocking buffer used was 3% non-fat dry milk in TBST. Detection was with a ECL Basic Kit. Exposure time: 1s.



Western blot analysis of extracts of various lysates, using Anti-Flotillin 1 Antibody (A15114) at 1:1,000 dilution. The secondary antibody was Goat Anti-Rabbit IgG H&L Antibody (HRP) at 1:10,000 dilution. Lysates/proteins were present at 25µg per lane. The blocking buffer used was 3% non-fat dry milk in TBST. Detection was with a ECL Basic Kit. Exposure time: 1s.



Immunohistochemistry analysis of paraffin-embedded mouse kidney using Anti-Flotillin 1 Antibody (A15114) at a dilution of 1:100 (40x lens). Perform microwave antigen retrieval with 10 mM Tris/EDTA buffer pH 9.0 before commencing with IHC staining protocol.



Immunohistochemistry analysis of paraffin-embedded rat heart using Anti-Flotillin 1 Antibody (A15114) at a dilution of 1:100 (40x lens). Perform microwave antigen retrieval with 10 mM Tris/EDTA buffer pH 9.0 before commencing with IHC staining protocol.