

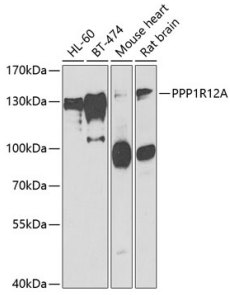
## Anti-Myosin Phosphatase Antibody (A15334)

### Specifications:

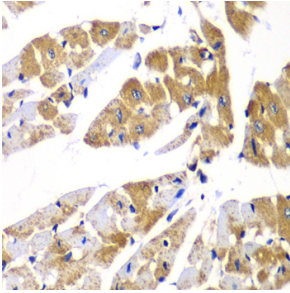
|                        |   |
|------------------------|---|
| Name:                  | Anti-Myosin Phosphatase Antibody  |
| Description:           | Rabbit polyclonal antibody to Myosin Phosphatase.   |
| Applications:          | WB, IHC   |
| Recommended Dilutions: | WB: 1:500-1:2,000, IHC: 1:50-1:200  |
| Reactivity:            | Human, Mouse, Rat   |
| Immunogen:             | Recombinant fusion protein containing a sequence corresponding to amino acids 710-970 of human PPP1R12A (NP_002471.1).  |
| Sequence:              | TIGRSRSTRTREQENEEKEKEEKEKQDKEKQEEKKESETSREDEYKQKYSRTYDETYQ<br>RYRPVSTSSSTTPSSSLSTMSSSLYASSQLNRPNSLVGITSAYSARGITKENEREKEKR<br>EEEKEGEDKSQPKSIRERRRRPREKRRSTGVSWFTQDSDENEQEQQSDTEEGSNKKETQ<br>TDSISRYETSSTSAGDRYDSSLGRSGSYSYLEERKPYSSRLEKDDSTDFKLLYEQILA<br>ENEKLKAQLHDTNMELTDLKLQLEKATQR |
| Host:                  | Rabbit  |
| Clonality:             | Polyclonal  |
| Isotype:               | IgG   |
| Conjugate:             | Unconjugated  |
| Purification:          | Affinity purification.  |
| Molecular Weight:      | 130 kDa   |
| Product Form:          | Liquid  |
| Formulation:           | Supplied in Phosphate Buffered Saline, pH 7.3, with 50% Glycerol and 0.02% Sodium Azide.  |
| Storage:               | Shipped at 4°C. Upon delivery aliquot and store at -20°C. Avoid freeze / thaw cycles.   |
| Disclaimer:            | This product is for research use only. It is not intended for diagnostic or therapeutic use.  |

## Anti-Myosin Phosphatase Antibody (A15334)

### Images:



Western blot analysis of extracts of various cell lines, using Anti-Myosin Phosphatase Antibody (A15334) at 1:1,000 dilution. The secondary antibody was Goat Anti-Rabbit IgG H&L Antibody (HRP) at 1:10,000 dilution. Lysates/proteins were present at 25 $\mu$ g per lane. The blocking buffer used was 3% non-fat dry milk in TBST. Detection was with a ECL Basic Kit. Exposure time: 90s.



Immunohistochemistry analysis of paraffin-embedded mouse heart using Anti-Myosin Phosphatase Antibody (A15334) at a dilution of 1:100 (40x lens).