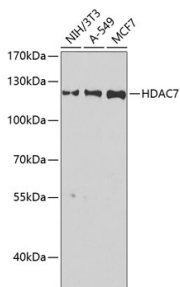


## Anti-HDAC7 Antibody (A15625)

### Specifications:

Name:	Anti-HDAC7 Antibody
Description:	Rabbit polyclonal antibody to HDAC7.
Applications:	WB, ICC/IF
Recommended Dilutions:	WB: 1:500-1:2,000, ICC/IF: 1:50-1:100
Reactivity:	Human, Mouse, Rat
Immunogen:	A synthetic peptide corresponding to a sequence within amino acids 500-600 of human HDAC7 (XP_011536783.2).
Sequence:	GQVVDDGLEHRELGHGQPEARGPAPLQQHPQVLLWEQQRLAGRLPRGSTGDTVLLPLA QGGHRPLSRAQSSPAAPASLSAPEPASQARVLSSETPARTLP
Host:	Rabbit
Clonality:	Polyclonal
Isotype:	IgG
Conjugate:	Unconjugated
Purification:	Affinity purification.
Molecular Weight:	120 kDa
Product Form:	Liquid
Formulation:	Supplied in Phosphate Buffered Saline, pH 7.3, with 50% Glycerol and 0.05% Proclin 300.
Storage:	Shipped at 4°C. Upon delivery aliquot and store at -20°C. Avoid freeze / thaw cycles.
Disclaimer:	This product is for research use only. It is not intended for diagnostic or therapeutic use.

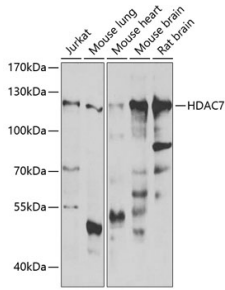
### Images:



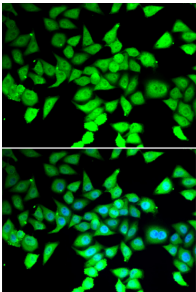
Western blot analysis of extracts of various cell lines, using Anti-HDAC7 Antibody (A15625) at 1:1,000 dilution. The secondary antibody was Goat Anti-Rabbit IgG H&L Antibody (HRP) at 1:10,000 dilution. Lysates/proteins were present at 25µg per lane. The blocking buffer used was 3% non-fat dry milk in TBST. Detection was with a ECL Basic Kit. Exposure time: 90s.

## Anti-HDAC7 Antibody (A15625)

Images continued:



Western blot analysis of extracts of various cell lines, using Anti-HDAC7 Antibody (A15625) at 1:1,000 dilution. The secondary antibody was Goat Anti-Rabbit IgG H&L Antibody (HRP) at 1:10,000 dilution. Lysates/proteins were present at 25 $\mu$ g per lane. The blocking buffer used was 3% BSA. Detection was with a ECL Enhanced Kit (RM00021). Exposure time: 30s.



Immunofluorescence analysis of MCF-7 cells using Anti-HDAC7 Antibody (A15625). DAPI was used to stain the cell nuclei (blue).