

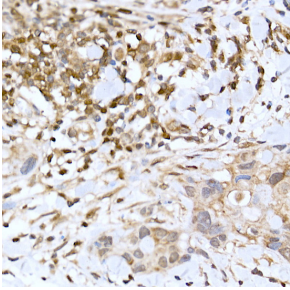
## Anti-TFEB Antibody (A15637)

### Specifications:

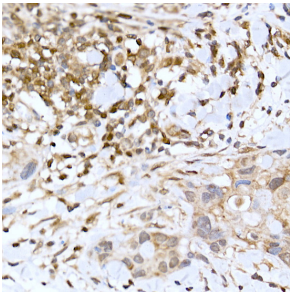
|                        |   |
|------------------------|---|
| Name:                  | Anti-TFEB Antibody  |
| Description:           | Rabbit polyclonal antibody to TFEB.   |
| Applications:          | WB, IHC, ICC/IF   |
| Recommended Dilutions: | WB: 1:500-1:2,000, IHC: 1:50-1:200, ICC/IF: 1:50-1:200  |
| Reactivity:            | Human, Mouse, Rat   |
| Immunogen:             | Recombinant fusion protein containing a sequence corresponding to amino acids 50-173 of human TFEB (NP_009093.1).                     |
| Sequence:              | TPAINTPVHFQSPPPVPGEVLKVQSYLENPTSYHLQSQHQKQVREYLSETYGNKFAAH<br>ISPAQGSPKPPPAASPGVRAGHVLSSSAGNSAPNSPMAMLHIGSNPERELDDVIDNIM<br>RLDDVVLGY |
| Host:                  | Rabbit  |
| Clonality:             | Polyclonal  |
| Isotype:               | IgG   |
| Conjugate:             | Unconjugated  |
| Purification:          | Affinity purification.  |
| Molecular Weight:      | 65 kDa  |
| Product Form:          | Liquid  |
| Formulation:           | Supplied in Phosphate Buffered Saline, pH 7.3, with 50% Glycerol and 0.02% Sodium Azide.  |
| Storage:               | Shipped at 4°C. Upon delivery aliquot and store at -20°C. Avoid freeze / thaw cycles.   |
| Disclaimer:            | This product is for research use only. It is not intended for diagnostic or therapeutic use.  |

## Anti-TFEB Antibody (A15637)

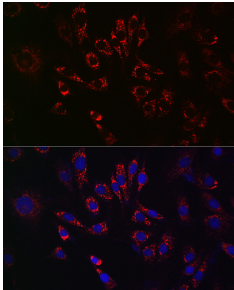
### Images:



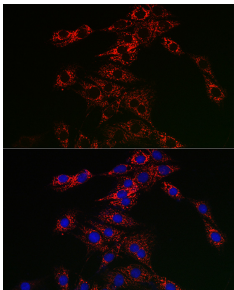
Immunohistochemistry analysis of paraffin-embedded human breast cancer tissue using Anti-TFEB Antibody (A15637) at a dilution of 1:100 (40x lens). Perform high pressure antigen retrieval with 10 mM citrate buffer pH 6.0 before commencing with IHC staining protocol.



Immunohistochemistry analysis of paraffin-embedded human breast cancer tissue using Anti-TFEB Antibody (A15637) at a dilution of 1:100 (40x lens). Perform high pressure antigen retrieval with 10 mM citrate buffer pH 6.0 before commencing with IHC staining protocol.



Immunofluorescence analysis of NIH/3T3 cells using Anti-TFEB Antibody (A15637) at a dilution of 1:50 (40x lens). DAPI was used to stain the cell nuclei (blue).



Immunofluorescence analysis of PC-12 cells using Anti-TFEB Antibody (A15637) at a dilution of 1:50 (40x lens). DAPI was used to stain the cell nuclei (blue).