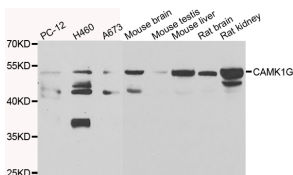


Anti-CAMK1G Antibody (A15671)

Specifications:

Name:	Anti-CAMK1G Antibody
Description:	Rabbit polyclonal antibody to CAMK1G.
Applications:	WB, IHC
Recommended Dilutions:	WB: 1:500-1:2000, IHC: 1:50-1:200
Reactivity:	Human, Mouse, Rat
Immunogen:	Recombinant fusion protein containing a sequence corresponding to amino acids 217-476 of human CAMK1G (NP_065172.1).
Sequence:	PPFYEETESKLFEDIKEGYEFESPFWDDISESAKDFICHILLEKDPNERYTCEKALSH PWIDGNTALHRDIYPSVSLQIQKNFAKSKWRQAFNAAAVVHHMRKLHMLHSPGVRPE VENRPPETQASETSRPSSPEITITEAPVLDHSVALPALTQLPCQHGRRPTAPGGRSLN CLVNGSLHISSSLVPMHQGSLAAGPCGCCSSCLNIGSKGKSSYCSEPTLLKKANKKQN FKSEVMVPVKASGSSHCRAGQGTGVCLIM
Host:	Rabbit
Clonality:	Polyclonal
Isotype:	IgG
Conjugate:	Unconjugated
Purification:	Affinity purification.
Molecular Weight:	53kDa
Formulation:	Supplied in Phosphate Buffered Saline, pH 7.30, with 0.02% Sodium Azide and 50% Glycerol.
Storage:	Shipped at 4°C. Upon delivery aliquot and store at -20°C. Avoid freeze / thaw cycles.
Disclaimer:	This product is for research use only. It is not intended for diagnostic or therapeutic use.

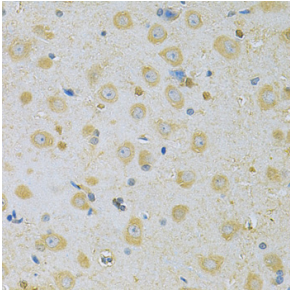
Images:



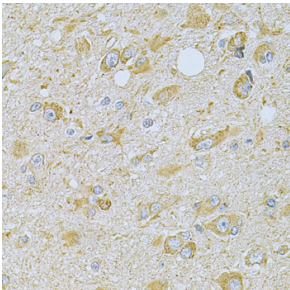
Western blot analysis of extracts of various cell lines, using Anti-CAMK1G Antibody (A15671) at 1:1,000 dilution.
Secondary antibody: Goat Anti-Rabbit IgG (H+L) (HRP) (AS014) at 1:10,000 dilution.
Lysates / proteins: 25µg per lane.
Blocking buffer: 3% non-fat dry milk in TBST.
Detection: ECL Basic Kit (RM00020).
Exposure time: 30s.

Anti-CAMK1G Antibody (A15671)

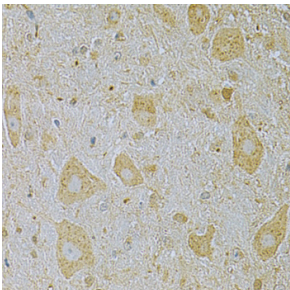
Images continued:



Immunohistochemistry of paraffin-embedded rat brain using Anti-CAMK1G Antibody (A7379) at dilution of 1:100 (40x lens).



Immunohistochemistry of paraffin-embedded human brain cancer using Anti-CAMK1G Antibody (A7379) at dilution of 1:100 (40x lens).



Immunohistochemistry of paraffin-embedded mouse brain using Anti-CAMK1G Antibody (A7379) at dilution of 1:100 (40x lens).