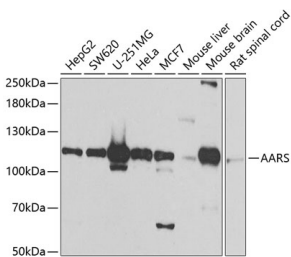


## Anti-AARS Antibody (A15937)

### Specifications:

Name:	Anti-AARS Antibody
Description:	Rabbit polyclonal antibody to AARS.
Applications:	WB, IHC
Recommended Dilutions:	WB: 1:500-1:2000, IHC: 1:50-1:100
Reactivity:	Human, Mouse, Rat
Immunogen:	A synthetic peptide of human AARS.
Host:	Rabbit
Clonality:	Polyclonal
Isotype:	IgG
Conjugate:	Unconjugated
Purification:	Affinity purification.
Molecular Weight:	107kDa
Formulation:	Supplied in Phosphate Buffered Saline, pH 7.30, with 0.02% Sodium Azide and 50% Glycerol.
Storage:	Shipped at 4°C. Upon delivery aliquot and store at -20°C. Avoid freeze / thaw cycles.
Disclaimer:	This product is for research use only. It is not intended for diagnostic or therapeutic use.

### Images:



Western blot analysis of extracts of various cell lines, using Anti-AARS Antibody (A7864) at 1:1,000 dilution.

Secondary antibody: Goat Anti-Rabbit IgG (H+L) (HRP) (AS014) at 1:10,000 dilution.

Lysates / proteins: 25µg per lane.

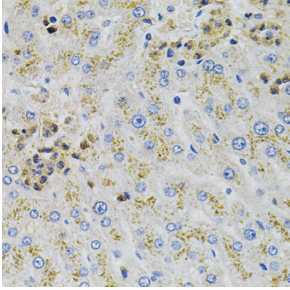
Blocking buffer: 3% non-fat dry milk in TBST.

Detection: ECL Basic Kit (RM00020).

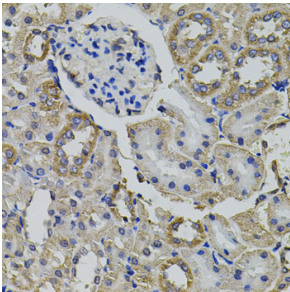
Exposure time: 90s.

## Anti-AARS Antibody (A15937)

Images continued:



Immunohistochemistry of paraffin-embedded human liver injury using Anti-AARS Antibody (A7864) (40x lens).



Immunohistochemistry of paraffin-embedded rat kidney using Anti-AARS Antibody (A7864) (40x lens).