

## Anti-NEDD4-2 Antibody (A16064)

### Specifications:

Name:	Anti-NEDD4-2 Antibody
Description:	Rabbit polyclonal antibody to NEDD4-2.
Applications:	WB, IHC, ICC/IF
Recommended Dilutions:	WB: 1:500-1:2,000, IHC: 1:50-1:200, ICC/IF: 1:50-1:200
Reactivity:	Human, Mouse, Rat
Immunogen:	Recombinant fusion protein containing a sequence corresponding to amino acids 1-975 of human NEDD4L (Q96PU5).
Sequence:	<p>MATGLGEPVYGLSEDEGESRILRVKVVSGIDLAKKDIFGASDPYVKLSLYVADENREL ALVQTKTIKKTLPKWNEEFYFRVNPSNHRLLEFVFDENRLTRDDFLGQVDVPLSHLP TEDPTMERPYTFKDFLLRPRSHKSRVKGFLRLKMAYMPKNGGQDEENSQRDDMEHGW EVDSDNSASQHQEELPPPPLPPGWEEKVDNLGRTYYVNHNNRTTQWHRPSLMDVSSE SDNNIRQINQEAHRRFRSRRHISEDLEPEPSEGGDVPEPWETISEEVNIAGDSLGLA LPPPPASPGSRTSPQELSELSRRLQITPDSNGEQFSSLIQREPSSRLRSCSVTDAVA EQGHLPPPSAPAGRARSSTVTGGEEPTPSVAYVHTTTPGLPSGWEERKDAKGRTYVNH NNRTTTWTRPIMQLAEDGASGSATNSNNHLIEPQIRRPRLSSPTVTLAPLEGAKDS PVRRRAVKDTLSNPQSPQSPYNSPKPQHKVTSFLPPGWEMRIAPNGRPFIDHNTKT TTWEDPRLKFPVHMRSKTSLNPNDLGPLPPGWEERIHLDGRTFYIDHNSKITQWEDPR LQNPAITGPAVPYSREFKQKYDYFRKKLKKPADIPNRFEMKLHRNNIFEESYRRIMSV KRPDVLKARLWIEFESEKGLDYGGVAREWFFLLSKEMFNPHYGLFEYSATDNYTLQIN PNSGLCNEDHLSYFTFIGRVAGLAVFHGKLLDGGFFIRPFYKMMLGKQITLNDMESVDS EYYNSLKWILENDPTELDLMFCIDEENFGQTYQVDLKPNGSEIMVTNENKREYIDLVI QWRFVNRVQKQMNAFLEGFTELLPIDLIKIFDENELELLMCGLDVDVDVNDWRQHSIYK NGYCPNHPVIQWFWKAVLLMDAEKRIRLLQFVTGTSRVPMNGFAELYGSNGPQLFTIE QWGSPEKL PRAHTCFNRDLPPYETFEDLREKLLMAVENAQQFEGVD</p>
Host:	Rabbit
Clonality:	Polyclonal
Isotype:	IgG
Conjugate:	Unconjugated
Purification:	Affinity purification.
Molecular Weight:	113 kDa
Product Form:	Liquid
Formulation:	Supplied in Phosphate Buffered Saline, pH 7.3, with 50% Glycerol and 0.01% Thiomersal.

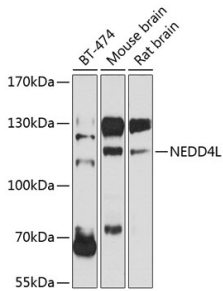
## Anti-NEDD4-2 Antibody (A16064)

### Specifications continued:

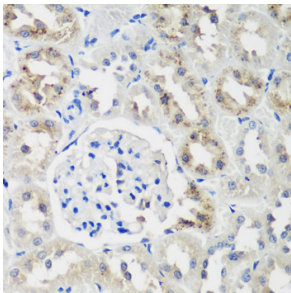
**Storage:** Shipped at 4°C. Upon delivery aliquot and store at -20°C. Avoid freeze / thaw cycles.

**Disclaimer:** This product is for research use only. It is not intended for diagnostic or therapeutic use.

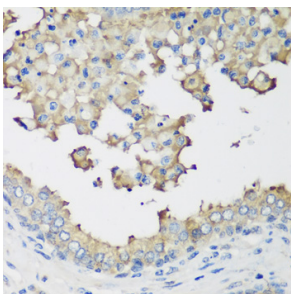
### Images:



Western blot analysis of extracts of various cell lines, using Anti-NEDD4-2 Antibody (A16064) at 1:1,000 dilution. The secondary antibody was Goat Anti-Rabbit IgG H&L Antibody (HRP) at 1:10,000 dilution. Lysates/proteins were present at 25µg per lane. The blocking buffer used was 3% non-fat dry milk in TBST. Detection was with a ECL Basic Kit. Exposure time: 90s.



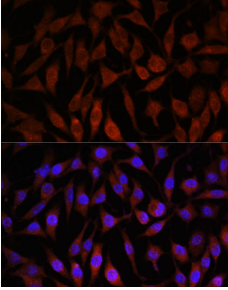
Immunohistochemistry analysis of paraffin-embedded rat kidney using Anti-NEDD4-2 Antibody (A16064) at a dilution of 1:200 (40x lens). Perform microwave antigen retrieval with 10 mM PBS buffer pH 7.2 before commencing with IHC staining protocol.



Immunohistochemistry analysis of paraffin-embedded human prostate using Anti-NEDD4-2 Antibody (A16064) at a dilution of 1:200 (40x lens). Perform microwave antigen retrieval with 10 mM PBS buffer pH 7.2 before commencing with IHC staining protocol.

## Anti-NEDD4-2 Antibody (A16064)

Images continued:



Immunofluorescence analysis of L929 cells using Anti-NEDD4-2 Antibody (A16064) at a dilution of 1:100. DAPI was used to stain the cell nuclei (blue).