

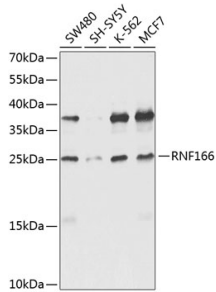
Anti-RNF166 Antibody (A16139)

Specifications:

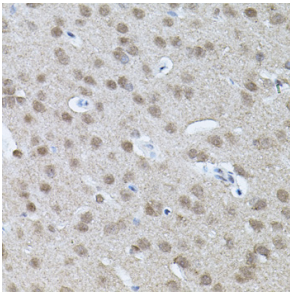
Name:	Anti-RNF166 Antibody
Description:	Rabbit polyclonal antibody to RNF166.
Applications:	WB, IHC
Recommended Dilutions:	WB: 1:500-1:2,000, IHC: 1:50-1:200
Reactivity:	Human, Mouse, Rat
Immunogen:	A synthetic peptide corresponding to a sequence within amino acids 100 to the C-terminus of human RNF166 (NP_849163.1).
Sequence:	GCNKKVTLAKMRVHISSCLKVQEQMANCPKFVPPVPTSQPIPSNIPNRSTFACPYCGA RNLDQQELVKHCVESHRSRDPNRVVCPICSAMPWGDPSYKSANFLQHLLHRHKFSYDTF VDYSIDEEAAFQAALALSLEN
Host:	Rabbit
Clonality:	Polyclonal
Isotype:	IgG
Conjugate:	Unconjugated
Purification:	Affinity purification.
Molecular Weight:	26 kDa
Product Form:	Liquid
Formulation:	Supplied in Phosphate Buffered Saline, pH 7.3, with 50% Glycerol and 0.02% Sodium Azide.
Storage:	Shipped at 4°C. Upon delivery aliquot and store at -20°C. Avoid freeze / thaw cycles.
Disclaimer:	This product is for research use only. It is not intended for diagnostic or therapeutic use.

Anti-RNF166 Antibody (A16139)

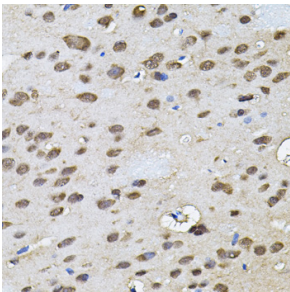
Images:



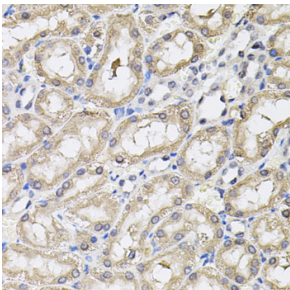
Western blot analysis of extracts of various cell lines, using Anti-RNF166 Antibody (A16139) at 1:1,000 dilution. The secondary antibody was Goat Anti-Rabbit IgG H&L Antibody (HRP) at 1:10,000 dilution. Lysates/proteins were present at 25 μ g per lane. The blocking buffer used was 3% non-fat dry milk in TBST. Detection was with a ECL Enhanced Kit (RM00021). Exposure time: 15s.



Immunohistochemistry analysis of paraffin-embedded mouse brain using Anti-RNF166 Antibody (A16139) (40x lens).



Immunohistochemistry analysis of paraffin-embedded rat brain using Anti-RNF166 Antibody (A16139) (40x lens).



Immunohistochemistry analysis of paraffin-embedded rat kidney using Anti-RNF166 Antibody (A16139) (40x lens).