

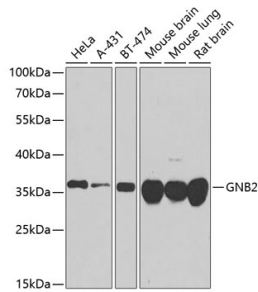
## Anti-GNB2 Antibody (A16187)

### Specifications:

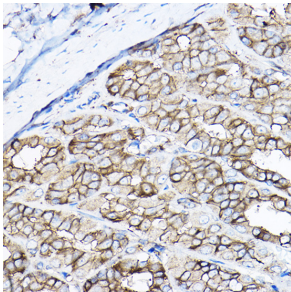
|                        |  |
|------------------------|--|
| Name:                  | Anti-GNB2 Antibody   |
| Description:           | Rabbit polyclonal antibody to GNB2.  |
| Applications:          | WB, IHC, ICC/IF  |
| Recommended Dilutions: | WB: 1:500-1:2,000, IHC: 1:50-1:200, ICC/IF: 1:50-1:200   |
| Reactivity:            | Human, Mouse, Rat  |
| Immunogen:             | Recombinant fusion protein containing a sequence corresponding to amino acids 1-340 of human GNB2 (NP_005264.2).   |
| Sequence:              | MSELEQLRQEAEQLRNQIRDARKACGDSTLTQITAGLDPVGRIQMRTTRRTLRLGHLAKI<br>YAMHWGTDSRLLVSASQDGKLIWDSYTTNKVHAIPLRSSWVMTCAAYAPSGNFVACGG<br>LDNICSYSLKTREGNVRVSRELPGHTGYLSCCRFLDDNQIITSSGDTTICALWDIETG<br>QQTVGFAGHSGDVMSLSLAPDGRTFVSGACDASIKLWDVRDSMCRQTFIGHESDINAV<br>AFFPNGYAFTTGSDDATCRLFDLRADQELLMYSHDNIICGITSVAFSRSGRLLLAGYD<br>DFNCNIWDAMKGDRAVLGHHDNRVSLGLVTDGMAVATGSWDSFLKIWN |
| Host:                  | Rabbit   |
| Clonality:             | Polyclonal   |
| Isotype:               | IgG  |
| Conjugate:             | Unconjugated   |
| Purification:          | Affinity purification.   |
| Molecular Weight:      | 37 kDa   |
| Product Form:          | Liquid   |
| Formulation:           | Supplied in Phosphate Buffered Saline, pH 7.3, with 50% Glycerol and 0.02% Sodium Azide.   |
| Storage:               | Shipped at 4°C. Upon delivery aliquot and store at -20°C. Avoid freeze / thaw cycles.  |
| Disclaimer:            | This product is for research use only. It is not intended for diagnostic or therapeutic use.   |

## Anti-GNB2 Antibody (A16187)

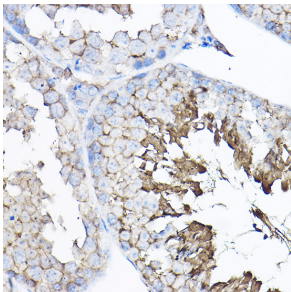
### Images:



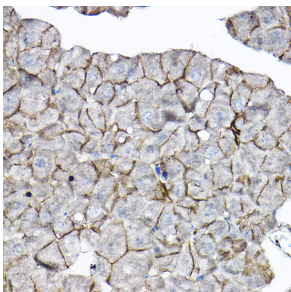
Western blot analysis of extracts of various cell lines, using Anti-GNB2 Antibody (A16187) at 1:1,000 dilution. The secondary antibody was Goat Anti-Rabbit IgG H&L Antibody (HRP) at 1:10,000 dilution. Lysates/proteins were present at 25µg per lane. The blocking buffer used was 3% non-fat dry milk in TBST. Detection was with a ECL Basic Kit. Exposure time: 90s.



Immunohistochemistry analysis of paraffin-embedded rat stomach using Anti-GNB2 Antibody (A16187) at a dilution of 1:100 (40x lens). Perform high pressure antigen retrieval with 10 mM citrate buffer pH 6.0 before commencing with IHC staining protocol.



Immunohistochemistry analysis of paraffin-embedded mouse testis using Anti-GNB2 Antibody (A16187) at a dilution of 1:100 (40x lens). Perform high pressure antigen retrieval with 10 mM citrate buffer pH 6.0 before commencing with IHC staining protocol.



Immunohistochemistry analysis of paraffin-embedded mouse pancreas using Anti-GNB2 Antibody (A16187) at a dilution of 1:100 (40x lens). Perform high pressure antigen retrieval with 10 mM citrate buffer pH 6.0 before commencing with IHC staining protocol.