

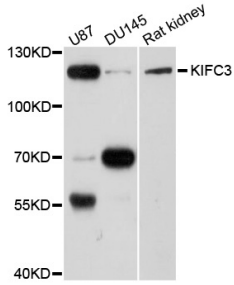
Anti-KIFC3 Antibody (A16250)

Specifications:

Name:	Anti-KIFC3 Antibody
Description:	Rabbit polyclonal antibody to KIFC3.
Applications:	WB
Recommended Dilutions:	WB: 1:200-1:2000
Reactivity:	Human, Rat
Immunogen:	Recombinant fusion protein containing a sequence corresponding to amino acids 140-390 of human KIFC3 (NP_005541.3).
Sequence:	MVENERLRQEMRRCEAELQELRTKPAGPCPGCEHSQESAQLRDKLSQLQLEMAESKGM LSELNLEVQQKTDRLAEVELRLKDCLAEKAEQEERLSRRLRDSHETIASLRAQSPPVK YVIKTVEVESSKTKQALSESQARNQHLQEQVAMQRQVLKEMEQQLQSSHQLTARLRAQ IAMYESELERAHGQMLEEMQSLEEDKNRAIEEAFARAQVEMKAVHENLAGVRTNLLTL QPALRTLNDYNGLKRQVR
Host:	Rabbit
Clonality:	Polyclonal
Isotype:	IgG
Conjugate:	Unconjugated
Purification:	Affinity purification.
Molecular Weight:	120kDa
Formulation:	Supplied in Phosphate Buffered Saline, pH 7.30, with 0.02% Sodium Azide and 50% Glycerol.
Storage:	Shipped at 4°C. Upon delivery aliquot and store at -20°C. Avoid freeze / thaw cycles.
Disclaimer:	This product is for research use only. It is not intended for diagnostic or therapeutic use.

Anti-KIFC3 Antibody (A16250)

Images:



Western blot analysis of extracts of various cell lines, using Anti-KIFC3 Antibody (A8617) at 1:1,000 dilution.

Secondary antibody: Goat Anti-Rabbit IgG (H+L) (HRP) (AS014) at 1:10,000 dilution.

Lysates / proteins: 25µg per lane.

Blocking buffer: 3% non-fat dry milk in TBST.

Detection: ECL Basic Kit (RM00020).

Exposure time: 30s.