

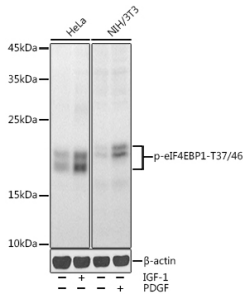
Anti-eIF4EBP1 (phospho Thr37 + Thr46) Antibody (A16402)

Specifications:

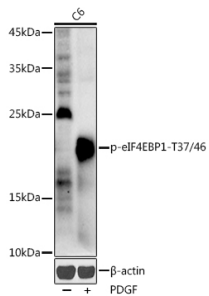
Name:	Anti-eIF4EBP1 (phospho Thr37 + Thr46) Antibody
Description:	Rabbit polyclonal antibody to eIF4EBP1 (phospho Thr37 + Thr46).
Applications:	WB, IHC
Recommended Dilutions:	WB: 1:500-1:1,000, IHC: 1:50-1:200
Reactivity:	Human, Mouse, Rat
Immunogen:	A synthetic phosphorylated peptide around T37 & T46 of human eIF4EBP1 (NP_004086.1).
Sequence:	STTPGGTLFSTT
Host:	Rabbit
Clonality:	Polyclonal
Isotype:	IgG
Conjugate:	Unconjugated
Purification:	Affinity purification.
Molecular Weight:	15 kDa - 20 kDa
Product Form:	Liquid
Formulation:	Supplied in Phosphate Buffered Saline, pH 7.3, with 50% Glycerol and 0.02% Sodium Azide.
Storage:	Shipped at 4°C. Upon delivery aliquot and store at -20°C. Avoid freeze / thaw cycles.
Disclaimer:	This product is for research use only. It is not intended for diagnostic or therapeutic use.

Anti-eIF4EBP1 (phospho Thr37 + Thr46) Antibody (A16402)

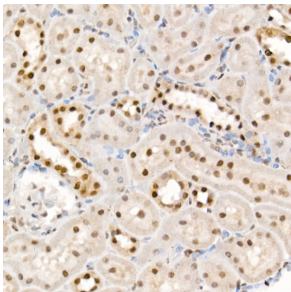
Images:



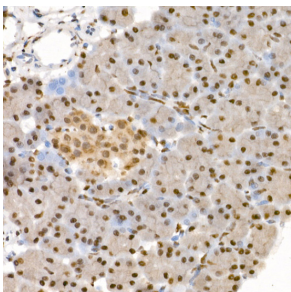
Western blot analysis of extracts of various cell lines, using Anti-eIF4EBP1 (phospho Thr37 + Thr46) Antibody (A16402) at 1:1,000 dilution. HeLa cells were treated by IGF-1 (50 ng/ml) at 37°C for 30 minutes after serum-starvation overnight. NIH/3T3 cells were treated by PDGF (100 ng/ml) at 37°C for 30 minutes after serum-starvation overnight. The secondary antibody was Goat Anti-Rabbit IgG H&L Antibody (HRP) at 1:10,000 dilution. Lysates/proteins were present at 25µg per lane. The blocking buffer used was 3% non-fat dry milk in TBST. Detection was with a ECL Enhanced Kit (RM00021). Exposure time: 30s.



Western blot analysis of extracts of C6 cells, using Anti-eIF4EBP1 (phospho Thr37 + Thr46) Antibody (A16402) at 1:1,000 dilution. C6 cells were treated by PDGF (100 ng/ml) at 37°C for 30 minutes after serum-starvation overnight. The secondary antibody was Goat Anti-Rabbit IgG H&L Antibody (HRP) at 1:10,000 dilution. Lysates/proteins were present at 25µg per lane. The blocking buffer used was 3% non-fat dry milk in TBST. Detection was with a ECL Enhanced Kit (RM00021). Exposure time: 180s.



Immunohistochemistry analysis of paraffin-embedded rat kidney using Anti-eIF4EBP1 (phospho Thr37 + Thr46) Antibody (A16402) at a dilution of 1:100 (40x lens). Perform high pressure antigen retrieval with 10 mM citrate buffer pH 6.0 before commencing with IHC staining protocol.



Immunohistochemistry analysis of paraffin-embedded rat pancreas using Anti-eIF4EBP1 (phospho Thr37 + Thr46) Antibody (A16402) at a dilution of 1:100 (40x lens). Perform high pressure antigen retrieval with 10 mM citrate buffer pH 6.0 before commencing with IHC staining protocol.