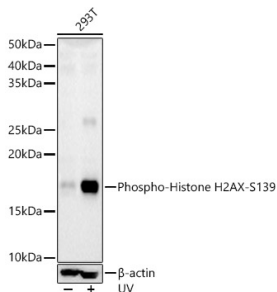


Anti-Histone H2A.X (phospho Ser139) Antibody (A16444)

Specifications:

Name:	Anti-Histone H2A.X (phospho Ser139) Antibody
Description:	Rabbit polyclonal antibody to Histone H2A.X (phospho Ser139).
Applications:	WB
Recommended Dilutions:	WB: 1:100-1:500
Reactivity:	Human, Mouse, Rat
Immunogen:	A synthetic phosphorylated peptide around S139 of human Histone H2AX (NP_002096.1).
Sequence:	TQASQ
Host:	Rabbit
Clonality:	Polyclonal
Isotype:	IgG
Conjugate:	Unconjugated
Purification:	Affinity purification.
Molecular Weight:	17 kDa
Product Form:	Liquid
Formulation:	Supplied in Phosphate Buffered Saline, pH 7.3, with 50% Glycerol and 0.05% Proclin 300.
Storage:	Shipped at 4°C. Upon delivery aliquot and store at -20°C. Avoid freeze / thaw cycles.
Disclaimer:	This product is for research use only. It is not intended for diagnostic or therapeutic use.

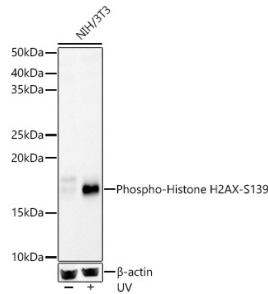
Images:



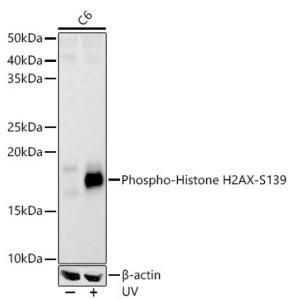
Western blot analysis of 293T, using Anti-Histone H2A.X (phospho Ser139) Antibody (A16444) at 1:500 dilution. 293T cells were treated by UV at room temperature for 15-30 minutes. The secondary antibody was Goat Anti-Rabbit IgG H&L Antibody (HRP) at 1:10,000 dilution. Lysates/proteins were present at 25µg per lane. The blocking buffer used was 3% non-fat dry milk in TBST. Detection was with a ECL Basic Kit. Exposure time: 60s.

Anti-Histone H2A.X (phospho Ser139) Antibody (A16444)

Images continued:



Western blot analysis of NIH/3T3, using Anti-Histone H2A.X (phospho Ser139) Antibody (A16444) at 1:500 dilution. NIH/3T3 cells were treated by UV at room temperature for 15-30 minutes. The secondary antibody was Goat Anti-Rabbit IgG H&L Antibody (HRP) at 1:10,000 dilution. Lysates/proteins were present at 25 μ g per lane. The blocking buffer used was 3% non-fat dry milk in TBST. Detection was with a ECL Basic Kit. Exposure time: 60s.



Western blot analysis of C6, using Anti-Histone H2A.X (phospho Ser139) Antibody (A16444) at 1:500 dilution. C6 cells were treated by UV at room temperature for 15-30 minutes. The secondary antibody was Goat Anti-Rabbit IgG H&L Antibody (HRP) at 1:10,000 dilution. Lysates/proteins were present at 25 μ g per lane. The blocking buffer used was 3% non-fat dry milk in TBST. Detection was with a ECL Basic Kit. Exposure time: 60s.