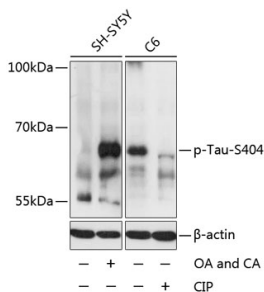


Anti-Tau (phospho Ser404) Antibody (A16489)

Specifications:

Name:	Anti-Tau (phospho Ser404) Antibody
Description:	Rabbit polyclonal antibody to Tau (phospho Ser404).
Applications:	WB, IHC, ICC/IF
Recommended Dilutions:	WB: 1:500-1:2,000, IHC: 1:50-1:100, ICC/IF: 1:100-1:200
Reactivity:	Human, Mouse, Rat
Immunogen:	A synthetic phosphorylated peptide around S404 of human Tau (NP_005901.2).
Sequence:	DTSPR
Host:	Rabbit
Clonality:	Polyclonal
Isotype:	IgG
Conjugate:	Unconjugated
Purification:	Affinity purification.
Molecular Weight:	65 kDa
Product Form:	Liquid
Formulation:	Supplied in Phosphate Buffered Saline, pH 7.3, with 50% Glycerol and 0.01% Thiomersal.
Storage:	Shipped at 4°C. Upon delivery aliquot and store at -20°C. Avoid freeze / thaw cycles.
Disclaimer:	This product is for research use only. It is not intended for diagnostic or therapeutic use.

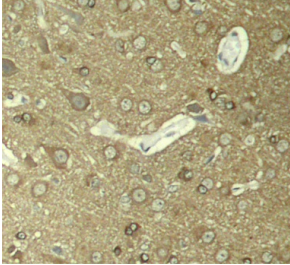
Images:



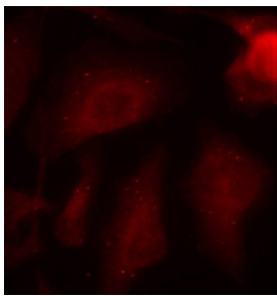
Western blot analysis of extracts of SH-SY5Y and C6 cells, using Anti-Tau (phospho Ser404) Antibody (A16489) at 1:2,000 dilution. SH-SY5Y cells were treated by Okadaic Acid (100nM) for 1 hour and Calyculin A (100nM) for 30 minutes after serum-starvation overnight. C6 cell lysates were treated by CIP at 37°C for 1 hour. The secondary antibody was Goat Anti-Rabbit IgG H&L Antibody (HRP) at 1:10,000 dilution. Lysates/proteins were present at 25µg per lane. The blocking buffer used was 3% BSA. Detection was with a ECL Basic Kit. Exposure time: 3s.

Anti-Tau (phospho Ser404) Antibody (A16489)

Images continued:



Immunohistochemistry analysis of paraffin-embedded rat hippocampal region tissue from a model with Alzheimer, using Anti-Tau (phospho Ser404) Antibody (A16489). Perform microwave antigen retrieval with 10 mM Tris/EDTA buffer pH 9.0 before commencing with IHC staining protocol.



Immunofluorescence analysis of methanol-fixed HeLa cells using Anti-Tau (phospho Ser404) Antibody (A16489).