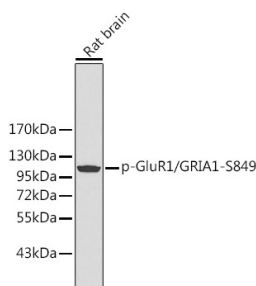


Anti-Glutamate Receptor 1 (AMPA subtype) (phospho Ser849) Antibody (A16539)

Specifications:

Name:	Anti-Glutamate Receptor 1 (AMPA subtype) (phospho Ser849) Antibody
Description:	Rabbit polyclonal antibody to Glutamate Receptor 1 (AMPA subtype) (phospho Ser849).
Applications:	WB
Recommended Dilutions:	WB: 1:500-1:2,000
Reactivity:	Human, Mouse, Rat
Immunogen:	A phospho specific peptide corresponding to residues surrounding S849 of human GluR1/GRIA1.
Host:	Rabbit
Clonality:	Polyclonal
Isotype:	IgG
Conjugate:	Unconjugated
Purification:	Affinity purification.
Molecular Weight:	102 kDa
Product Form:	Liquid
Formulation:	Supplied in Phosphate Buffered Saline, pH 7.3, with 50% Glycerol and 0.05% Proclin 300.
Storage:	Shipped at 4°C. Upon delivery aliquot and store at -20°C. Avoid freeze / thaw cycles.
Disclaimer:	This product is for research use only. It is not intended for diagnostic or therapeutic use.

Images:



Western blot analysis of extracts from rat brain tissue using Anti-Glutamate Receptor 1 (AMPA subtype) (phospho Ser849) Antibody (A16539). The secondary antibody was Goat Anti-Rabbit IgG H&L Antibody (HRP) at 1:10,000 dilution. Lysates/proteins were present at 25µg per lane. The blocking buffer used was 3% BSA.