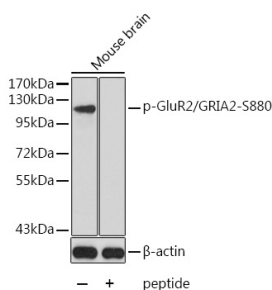


# Anti-Ionotropic Glutamate receptor 2 (phospho Ser880) Antibody (A16548)

## Specifications:

Name:	Anti-Ionotropic Glutamate receptor 2 (phospho Ser880) Antibody
Description:	Rabbit polyclonal antibody to Ionotropic Glutamate receptor 2 (phospho Ser880).
Applications:	WB
Recommended Dilutions:	WB: 1:500-1:2,000
Reactivity:	Human, Mouse, Rat
Immunogen:	A phospho specific peptide corresponding to residues surrounding S880 of human GluR2/GRIA2.
Host:	Rabbit
Clonality:	Polyclonal
Isotype:	IgG
Conjugate:	Unconjugated
Purification:	Affinity purification.
Molecular Weight:	120 kDa
Product Form:	Liquid
Formulation:	Supplied in Phosphate Buffered Saline, pH 7.3, with 50% Glycerol and 0.02% Sodium Azide.
Storage:	Shipped at 4°C. Upon delivery aliquot and store at -20°C. Avoid freeze / thaw cycles.
Disclaimer:	This product is for research use only. It is not intended for diagnostic or therapeutic use.

## Images:



Western blot analysis of extracts from mouse brain tissue using Anti-Ionotropic Glutamate receptor 2 (phospho Ser880) Antibody (A16548) and the same antibody preincubated with blocking peptide. The secondary antibody was Goat Anti-Rabbit IgG H&L Antibody (HRP) at 1:10,000 dilution. Lysates/proteins were present at 25µg per lane. The blocking buffer used was 3% BSA.