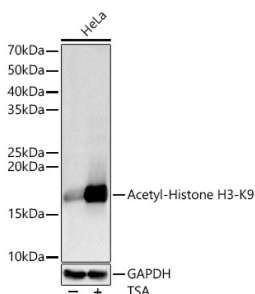


Anti-Histone H3 (acetyl Lys9) Antibody (A16741)

Specifications:

| | |
|------------------------|---|
| Name: | Anti-Histone H3 (acetyl Lys9) Antibody |
| Description: | Rabbit polyclonal antibody to Histone H3 (acetyl Lys9). |
| Applications: | WB, IHC, ICC/IF, IP, ChIP, ChIP-seq |
| Recommended Dilutions: | WB: 1:500-1:1,000, IHC: 1:50-1:200, ICC/IF: 1:50-1:200, IP: 1:50-1:200, ChIP: 1:20-1:100, ChIP-seq: 1:20-1:50 |
| Reactivity: | Human, Mouse, Rat |
| Immunogen: | A synthetic acetylated peptide around K9 of human Histone H3 (NP_003520.1). |
| Sequence: | ARKST |
| Host: | Rabbit |
| Clonality: | Polyclonal |
| Isotype: | IgG |
| Conjugate: | Unconjugated |
| Purification: | Affinity purification. |
| Molecular Weight: | 17 kDa |
| Product Form: | Liquid |
| Formulation: | Supplied in Phosphate Buffered Saline, pH 7.3, with 50% Glycerol and 0.05% Proclin 300. |
| Storage: | Shipped at 4°C. Upon delivery aliquot and store at -20°C. Avoid freeze / thaw cycles. |
| Disclaimer: | This product is for research use only. It is not intended for diagnostic or therapeutic use. |

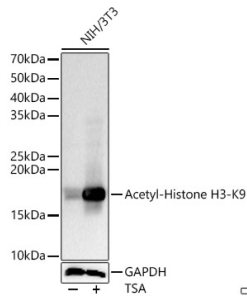
Images:



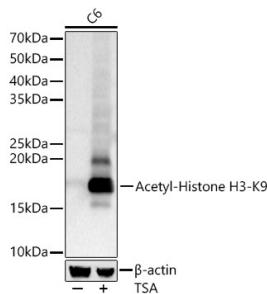
Western blot analysis of HeLa, using Anti-Histone H3 (acetyl Lys9) Antibody (A16741) at 1:1,000 dilution. HeLa cells were treated by TSA (1 μ M) at 37°C for 18 hours. The secondary antibody was Goat Anti-Rabbit IgG H&L Antibody (HRP) at 1:10,000 dilution. Lysates/proteins were present at 25 μ g per lane. The blocking buffer used was 3% non-fat dry milk in TBST. Detection was with a ECL Basic Kit. Exposure time: 10s.

Anti-Histone H3 (acetyl Lys9) Antibody (A16741)

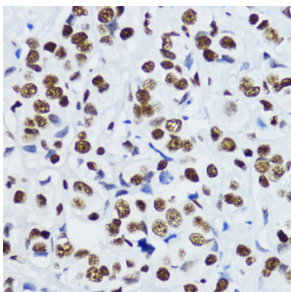
Images continued:



Western blot analysis of NIH/3T3, using Anti-Histone H3 (acetyl Lys9) Antibody (A16741) at 1:1,000 dilution. NIH/3T3 cells were treated by TSA (1 μ M) at 37°C for 18 hours. The secondary antibody was Goat Anti-Rabbit IgG H&L Antibody (HRP) at 1:10,000 dilution. Lysates/proteins were present at 25 μ g per lane. The blocking buffer used was 3% non-fat dry milk in TBST. Detection was with a ECL Basic Kit. Exposure time: 10s.



Western blot analysis of C6, using Anti-Histone H3 (acetyl Lys9) Antibody (A16741) at 1:1,000 dilution. C6 cells were treated by TSA (1 μ M) at 37°C for 18 hours. The secondary antibody was Goat Anti-Rabbit IgG H&L Antibody (HRP) at 1:10,000 dilution. Lysates/proteins were present at 25 μ g per lane. The blocking buffer used was 3% non-fat dry milk in TBST. Detection was with a ECL Basic Kit. Exposure time: 10s.



Immunohistochemistry analysis of paraffin-embedded human mammary cancer using Anti-Histone H3 (acetyl Lys9) Antibody (A16741) at a dilution of 1:200 (40x lens). Perform microwave antigen retrieval with 10 mM PBS buffer pH 7.2 before commencing with IHC staining protocol.