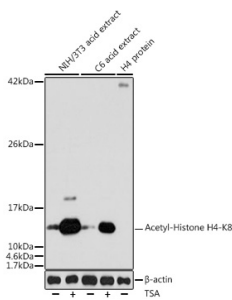


Anti-Histone H4 (acetyl Lys8) Antibody (A16744)

Specifications:

Name:	Anti-Histone H4 (acetyl Lys8) Antibody
Description:	Rabbit polyclonal antibody to Histone H4 (acetyl Lys8).
Applications:	WB, IHC, ICC/IF, IP, ChIP, ChIP-seq
Recommended Dilutions:	WB: 1:500-1:1,000, IHC: 1:50-1:200, ICC/IF: 1:500-1:1,000, IP: 1:200-1:500, ChIP: 1:20-1:50, ChIP-seq: 1:20-1:50
Reactivity:	Human, Mouse, Rat
Immunogen:	A synthetic acetylated peptide around K8 of human Histone H4 (NP_003529.1).
Sequence:	GGKGL
Host:	Rabbit
Clonality:	Polyclonal
Isotype:	IgG
Conjugate:	Unconjugated
Purification:	Affinity purification.
Molecular Weight:	11 kDa
Product Form:	Liquid
Formulation:	Supplied in Phosphate Buffered Saline, pH 7.3, with 50% Glycerol and 0.02% Sodium Azide.
Storage:	Shipped at 4°C. Upon delivery aliquot and store at -20°C. Avoid freeze / thaw cycles.
Disclaimer:	This product is for research use only. It is not intended for diagnostic or therapeutic use.

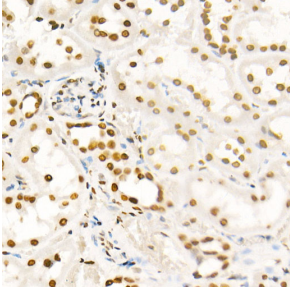
Images:



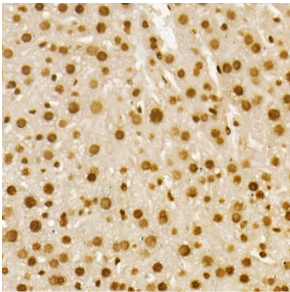
Western blot analysis of extracts of various cell lines, using Anti-Histone H4 (acetyl Lys8) Antibody (A16744) at 1:1,000 dilution. NIH/3T3 cells and C6 cells were treated by TSA (1 uM) at 37°C for 18 hours. The secondary antibody was Goat Anti-Rabbit IgG H&L Antibody (HRP) at 1:10,000 dilution. Lysates/proteins were present at 25µg per lane. The blocking buffer used was 3% non-fat dry milk in TBST. Detection was with a ECL Basic Kit. Exposure time: 30s.

Anti-Histone H4 (acetyl Lys8) Antibody (A16744)

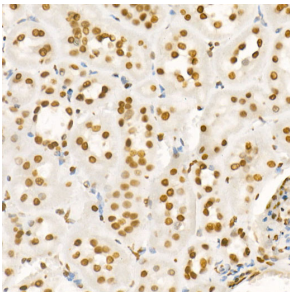
Images continued:



Immunohistochemistry analysis of paraffin-embedded human kidney using Anti-Histone H4 (acetyl Lys8) Antibody (A16744) at a dilution of 1:20 (40x lens). Perform high pressure antigen retrieval with 10 mM citrate buffer pH 6.0 before commencing with IHC staining protocol.



Immunohistochemistry analysis of paraffin-embedded mouse liver using Anti-Histone H4 (acetyl Lys8) Antibody (A16744) at a dilution of 1:20 (40x lens). Perform high pressure antigen retrieval with 10 mM citrate buffer pH 6.0 before commencing with IHC staining protocol.



Immunohistochemistry analysis of paraffin-embedded rat kidney using Anti-Histone H4 (acetyl Lys8) Antibody (A16744) at a dilution of 1:20 (40x lens). Perform high pressure antigen retrieval with 10 mM citrate buffer pH 6.0 before commencing with IHC staining protocol.