

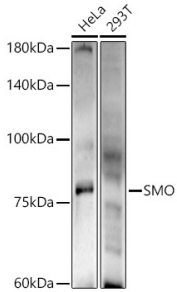
Anti-Smoothened Antibody (A16839)

Specifications:

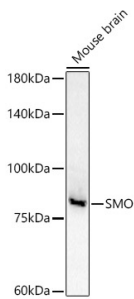
Name:	Anti-Smoothened Antibody
Description:	Rabbit polyclonal antibody to Smoothened.
Applications:	WB
Recommended Dilutions:	WB: 1:100-1:500
Reactivity:	Human, Mouse
Immunogen:	Recombinant fusion protein containing a sequence corresponding to amino acids 54-219 of human SMO (NP_005622.1).
Sequence:	VTGPPPLSHCGRAAPCEPLRYNVCLGSLVLPYGATSTLLAGDSDSQEEAHGKLVLSWG LRNAPRCWAVIQPLLCAVYMPKCENDRVELPSRTLQATRGPCAIVERERGWPDFLRC TPDRFPEGCTNEVQNIKFNSSGQCEVPLVRTDNPKSWYEDVEGCGIQCQN
Host:	Rabbit
Clonality:	Polyclonal
Isotype:	IgG
Conjugate:	Unconjugated
Purification:	Affinity purification.
Molecular Weight:	86 kDa
Product Form:	Liquid
Formulation:	Supplied in Phosphate Buffered Saline, pH 7.3, with 50% Glycerol and 0.05% Proclin 300.
Storage:	Shipped at 4°C. Upon delivery aliquot and store at -20°C. Avoid freeze / thaw cycles.
Disclaimer:	This product is for research use only. It is not intended for diagnostic or therapeutic use.

Anti-Smoothened Antibody (A16839)

Images:



Western blot analysis of extracts of various cell lines, using Anti-Smoothened Antibody (A16839) at 1:500 dilution. The secondary antibody was Goat Anti-Rabbit IgG H&L Antibody (HRP) at 1:10,000 dilution. Lysates/proteins were present at 25 μ g per lane. The blocking buffer used was 3% non-fat dry milk in TBST. Detection was with a ECL Enhanced Kit (RM00021). Exposure time: 120s.



Western blot analysis of extracts of Mouse brain, using Anti-Smoothened Antibody (A16839) at 1:500 dilution. The secondary antibody was Goat Anti-Rabbit IgG H&L Antibody (HRP) at 1:10,000 dilution. Lysates/proteins were present at 25 μ g per lane. The blocking buffer used was 3% non-fat dry milk in TBST. Detection was with a ECL Basic Kit. Exposure time: 180s.