

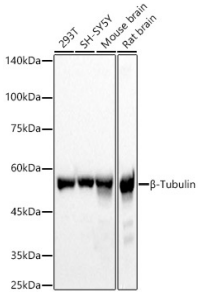
Anti-beta Tubulin Antibody (A17307)

Specifications:

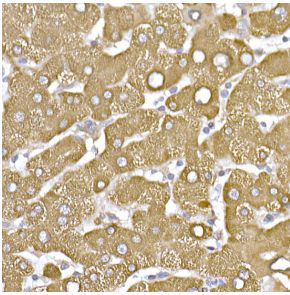
Name:	Anti-beta Tubulin Antibody
Description:	Rabbit polyclonal antibody to beta Tubulin.
Applications:	WB, IHC, ICC/IF
Recommended Dilutions:	WB: 1:500-1:1,000, IHC: 1:50-1:200, ICC/IF: 1:50-1:200
Reactivity:	Human, Mouse, Rat
Immunogen:	Recombinant fusion protein containing a sequence corresponding to amino acids 40-260 of human β -Tubulin (NP_006077.2).
Sequence:	SDLQLERISVYYNEASSHKYVPRAILVDLEPGTMDSVRSGAFGHLFRPDNFIFGQSGA GNNWAKGHYTEGAELVDSVLDVVRKECENCDCCLQGFQLTHSLGGGTGSGMGTLISKV REEYPDRIMNTFSVVPSPKVS DTVVEPYNATLSIHLVENTDETYCIDNEALYDICFR TLKLATPTYGDLNHLVSATMSGVTTSLRFPGLNADLRKLAVNMVFP
Host:	Rabbit
Clonality:	Polyclonal
Isotype:	IgG
Conjugate:	Unconjugated
Purification:	Affinity purification.
Molecular Weight:	55 kDa
Product Form:	Liquid
Formulation:	Supplied in Phosphate Buffered Saline, pH 7.3, with 50% Glycerol and 0.05% Proclin 300.
Storage:	Shipped at 4°C. Upon delivery aliquot and store at -20°C. Avoid freeze / thaw cycles.
Disclaimer:	This product is for research use only. It is not intended for diagnostic or therapeutic use.

Anti-beta Tubulin Antibody (A17307)

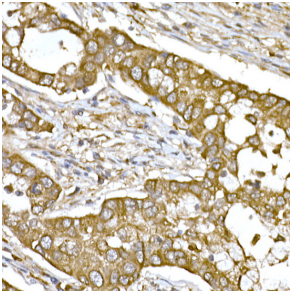
Images:



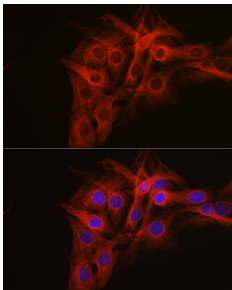
Western blot analysis of various lysates, using Anti-beta Tubulin Antibody (A17307) at 1:10,000 dilution. Lysates/proteins were present at 25 μ g per lane. The blocking buffer used was 3% non-fat dry milk in TBST. Detection was with a ECL Basic Kit. Exposure time: 1s.



Immunohistochemistry analysis of paraffin-embedded human liver using Anti-beta Tubulin Antibody (A17307) Immunohistochemistry analysis of paraffin-embedded human liver using beta-Tubulin Rabbit polyclonal antibody (AC008) at a dilution of 1:200 (40x lens). Perform high pressure antigen retrieval with 10 mM citrate buffer pH 6.0 before commencing with IHC staining protocol.



Immunohistochemistry analysis of paraffin-embedded human lung cancer using Anti-beta Tubulin Antibody (A17307) Immunohistochemistry analysis of paraffin-embedded human lung cancer using beta-Tubulin Rabbit polyclonal antibody (AC008) at a dilution of 1:200 (40x lens). Perform high pressure antigen retrieval with 10 mM citrate buffer pH 6.0 before commencing with IHC staining protocol.



Immunofluorescence analysis of C6 cells using Anti-beta Tubulin Antibody (A17307) at a dilution of 1:100 (40x lens). DAPI was used to stain the cell nuclei (blue).