

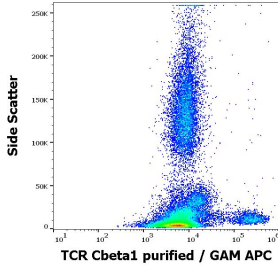
Anti-TCR C beta 1 Antibody [JOVI.1] (A242904)

Specifications:

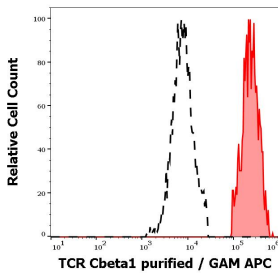
Name:	Anti-TCR C beta 1 Antibody [JOVI.1]
Description:	Mouse monoclonal [JOVI.1] antibody to TCR C beta 1.
Specificity:	This antibody recognizes an extracellular epitope on TCR C beta 1.
Applications:	Flow Cytometry, IP, IHC-Fr
Recommended Dilutions:	Flow Cytometry: 2-6 µg/ml
Reactivity:	Human
Immunogen:	Thymus, spleen, and mesenteric lymph nodes isolated from a mouse transgenic for human TCR V beta 3 C beta 1.
Host:	Mouse
Clonality:	Monoclonal
Clone ID:	JOVI.1
Isotype:	IgG2a
Light Chains:	kappa
Conjugate:	Unconjugated
Purification:	Protein A chromatography.
Concentration:	1 mg/ml
Product Form:	Liquid
Formulation:	Supplied in Phosphate Buffered Saline with 15 mM Sodium Azide.
Storage:	Shipped at 4°C. Upon delivery aliquot and store at -20°C. Avoid freeze / thaw cycles.
Disclaimer:	This product is for research use only. It is not intended for diagnostic or therapeutic use.

Anti-TCR C beta 1 Antibody [JOVI.1] (A242904)

Images:



Flow cytometry surface staining pattern of human peripheral whole blood stained using Anti-TCR C beta 1 Antibody (concentration in sample 1.7 µg/ml, .



Separation of human TCR Cbeta1 positive lymphocytes (red-filled) from TCR Cbeta1 negative lymphocytes (black-dashed) in flow cytometry analysis (surface staining) of human peripheral whole blood stained using Anti-TCR C beta 1 Antibody (concentration in sample 1.7 µg/ml, GAM-APC).