

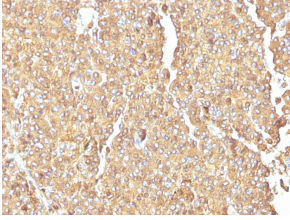
Anti-Chromogranin A Antibody [LK2H10] (A248196)

Specifications:

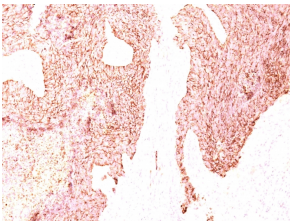
Name:	Anti-Chromogranin A Antibody [LK2H10]
Description:	Mouse monoclonal [LK2H10] antibody to Chromogranin A.
Applications:	IHC-P
Recommended Dilutions:	IHC-P: 1-2 µg/ml
Reactivity:	Human, Monkey, Porcine, Mouse, Rat
Cross Reactivity:	This antibody does not cross react with Guinea Pig, Sheep, or Rabbit.
Immunogen:	Human pheochromocytoma.
Host:	Mouse
Clonality:	Monoclonal
Clone ID:	LK2H10
Isotype:	IgG1
Light Chains:	kappa
Conjugate:	Unconjugated
Purification:	Protein A/G chromatography.
Concentration:	200 µg/ml
Product Form:	Liquid
Formulation:	Supplied in 10mM Phosphate Buffered Saline with 0.05% BSA and 0.05% Sodium Azide.
Storage:	Shipped at 4°C. Upon delivery aliquot and store at -20°C. Avoid freeze / thaw cycles.
General Notes:	This monoclonal antibody is also available in a different formulation without BSA and Sodium Azide - Anti-Chromogranin A Antibody [LK2H10] - BSA and Azide free (A251379).
Disclaimer:	This product is for research use only. It is not intended for diagnostic or therapeutic use.

Anti-Chromogranin A Antibody [LK2H10] (A248196)

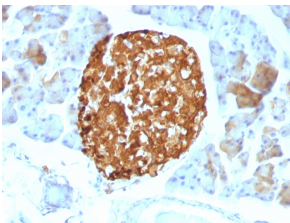
Images:



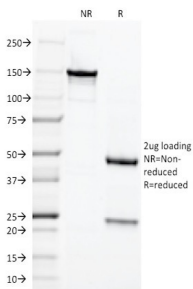
Immunohistochemical analysis of formalin-fixed, paraffin-embedded human adrenal gland using Anti-Chromogranin A Antibody [LK2H10].



Immunohistochemical analysis of formalin-fixed, paraffin-embedded human small cell lung carcinoma using Anti-Chromogranin A Antibody [LK2H10].



Immunohistochemical analysis of formalin-fixed, paraffin-embedded mouse pancreas using Anti-Chromogranin A Antibody [LK2H10].



SDS-PAGE analysis of Anti-Chromogranin A Antibody [LK2H10] under non-reduced and reduced conditions; showing intact IgG and intact heavy and light chains, respectively. SDS-PAGE analysis confirms the integrity and purity of the antibody.