

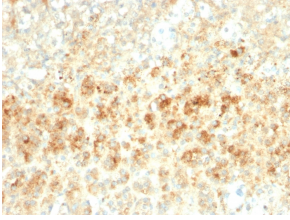
## Anti-Adipophilin Antibody [ADFP/2755R] (A248236)

### Specifications:

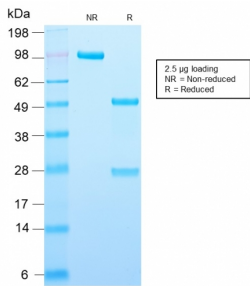
Name:	Anti-Adipophilin Antibody [ADFP/2755R]
Description:	Recombinant rabbit monoclonal [ADFP/2755R] antibody to Adipophilin.
Specificity:	This antibody recognizes a protein of 48kDa, which is identified as Adipophilin. It belongs to the perilipin family, members of which coat intracellular lipid storage droplets. This protein is associated with the lipid globule surface membrane material, and maybe involved in development and maintenance of adipose tissue. However, it is not restricted to adipocytes as previously thought, but is found in a wide range of cultured cell lines, including fibroblasts, endothelial and epithelial cells, and tissues, such as lactating mammary gland, adrenal cortex, Sertoli and Leydig cells, and hepatocytes in alcoholic liver cirrhosis, suggesting that it may serve as a marker of lipid accumulation in diverse cell types and diseases.
Applications:	ELISA, WB, IHC-P
Recommended Dilutions:	WB: 1-2 µg/ml, IHC-P: 1-2 µg/ml
Reactivity:	Human
Immunogen:	Recombinant fragment, around amino acids 249-376, of human Adipophilin protein. The exact sequence is proprietary.
Host:	Rabbit
Clonality:	Monoclonal
Clone ID:	ADFP/2755R
Isotype:	IgG
Conjugate:	Unconjugated
Purification:	Protein A/G chromatography.
Concentration:	200 µg/ml
Product Form:	Liquid
Formulation:	Supplied in 10mM Phosphate Buffered Saline with 0.05% BSA and 0.05% Sodium Azide.
Storage:	Shipped at 4°C. Upon delivery aliquot and store at -20°C. Avoid freeze / thaw cycles.
General Notes:	This monoclonal antibody is also available in a different formulation without BSA and Sodium Azide - Anti-Adipophilin Antibody [ADFP/2755R] - BSA and Azide free (A251419).
Disclaimer:	This product is for research use only. It is not intended for diagnostic or therapeutic use.

## Anti-Adipophilin Antibody [ADFP/2755R] (A248236)

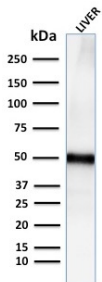
### Images:



Immunohistochemical analysis of formalin-fixed, paraffin-embedded human adrenal gland using Anti-Adipophilin Antibody [ADFP/2755R].



SDS-PAGE analysis of Anti-Adipophilin Antibody [ADFP/2755R] under non-reduced and reduced conditions; showing intact IgG and intact heavy and light chains, respectively. SDS-PAGE analysis confirms the integrity and purity of the antibody.



Western blot analysis of human liver tissue lysate using Anti-Adipophilin Antibody [ADFP/2755R].