

Anti-ZNF690 Antibody [ZSCAN29/2610] (A248279)

Specifications:

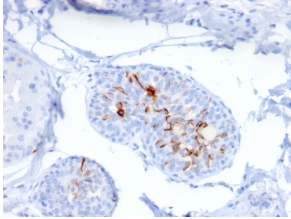
Name:	Anti-ZNF690 Antibody [ZSCAN29/2610]
Description:	Mouse monoclonal [ZSCAN29/2610] antibody to ZNF690.
Specificity:	Zinc finger proteins contain DNA-binding domains and have a wide variety of functions, most of which encompass some form of transcriptional activation or repression. The majority of zinc finger proteins contain a Kruppel-type DNA binding domain and a KRAB domain, which is thought to interact with KAP1, thereby recruiting histone modifying proteins. Zinc finger protein 690 (ZNF690), also known as ZSCAN29, is a 851 amino acid member of the Kruppel C2H2- type zinc finger protein family. Localized to the nucleus, ZNF690 contains six C2H2-type zinc fingers and one KRAB domain through which it is thought to be involved in DNA-binding and transcriptional regulation. Four isoforms of ZNF690 exist as a result of alternative splicing events.
Applications:	ELISA, IHC-P
Recommended Dilutions:	IHC-P: 1-2 µg/ml
Reactivity:	Human
Immunogen:	Recombinant full-length human ZSCAN29 protein.
Host:	Mouse
Clonality:	Monoclonal
Clone ID:	ZSCAN29/2610
Isotype:	IgG1
Light Chains:	kappa
Conjugate:	Unconjugated
Purification:	Protein A/G chromatography.
Concentration:	200 µg/ml
Product Form:	Liquid
Formulation:	Supplied in 10mM Phosphate Buffered Saline with 0.05% BSA and 0.05% Sodium Azide.
Storage:	Shipped at 4°C. Upon delivery aliquot and store at -20°C. Avoid freeze / thaw cycles.
General Notes:	This monoclonal antibody is also available in a different formulation without BSA and Sodium Azide - Anti-ZNF690 Antibody [ZSCAN29/2610] - BSA and Azide free (A251461).

Anti-ZNF690 Antibody [ZSCAN29/2610] (A248279)

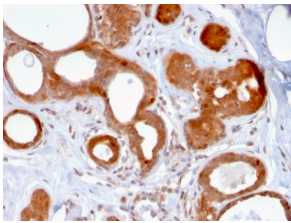
Specifications continued:

Disclaimer: This product is for research use only. It is not intended for diagnostic or therapeutic use.

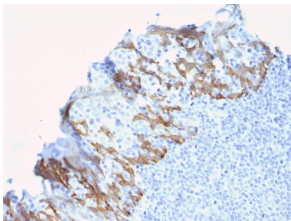
Images:



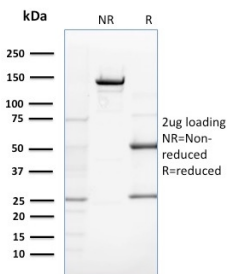
Immunohistochemical analysis of formalin-fixed, paraffin-embedded human breast carcinoma using Anti-ZNF690 Antibody [ZSCAN29/2610].



Immunohistochemical analysis of formalin-fixed, paraffin-embedded human breast carcinoma using Anti-ZNF690 Antibody [ZSCAN29/2610].



Immunohistochemical analysis of formalin-fixed, paraffin-embedded human breast carcinoma using Anti-ZNF690 Antibody [ZSCAN29/2610].



SDS-PAGE analysis of Anti-ZNF690 Antibody [ZSCAN29/2610] under non-reduced and reduced conditions; showing intact IgG and intact heavy and light chains, respectively. SDS-PAGE analysis confirms the integrity and purity of the antibody.