

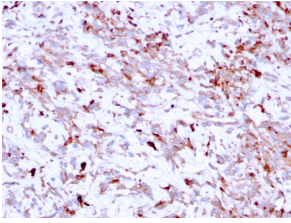
Anti-Cathepsin K Antibody [CTSK/2791] (A248309)

Specifications:

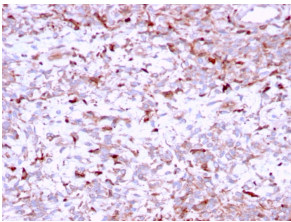
Name:	Anti-Cathepsin K Antibody [CTSK/2791]
Description:	Mouse monoclonal [CTSK/2791] antibody to Cathepsin K.
Specificity:	The protein encoded by this gene is a lysosomal cysteine proteinase involved in bone remodeling and resorption. This protein, which is a member of the peptidase C1 protein family, is predominantly expressed in osteoclasts. However, the encoded protein is also expressed in a significant fraction of human breast cancers, where it could contribute to tumor invasiveness. Mutations in this gene are the cause of pycnodysostosis, an autosomal recessive disease characterized by osteosclerosis and short stature.
Applications:	IHC-P
Recommended Dilutions:	IHC-P: 1-2 µg/ml
Reactivity:	Human
Immunogen:	Recombinant fragment, around amino acids 163-274, of human Cathepsin K protein. The exact sequence is proprietary.
Host:	Mouse
Clonality:	Monoclonal
Clone ID:	CTSK/2791
Isotype:	IgG1
Light Chains:	kappa
Conjugate:	Unconjugated
Purification:	Protein A/G chromatography.
Concentration:	200 µg/ml
Product Form:	Liquid
Formulation:	Supplied in 10mM Phosphate Buffered Saline with 0.05% BSA and 0.05% Sodium Azide.
Storage:	Shipped at 4°C. Upon delivery aliquot and store at -20°C. Avoid freeze / thaw cycles.
General Notes:	This monoclonal antibody is also available in a different formulation without BSA and Sodium Azide - Anti-Cathepsin K Antibody [CTSK/2791] - BSA and Azide free (A251491).
Disclaimer:	This product is for research use only. It is not intended for diagnostic or therapeutic use.

Anti-Cathepsin K Antibody [CTSK/2791] (A248309)

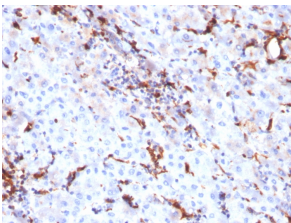
Images:



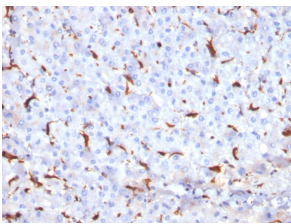
Immunohistochemical analysis of formalin-fixed, paraffin-embedded human liver carcinoma using Anti-Cathepsin K Antibody [CTSK/2791].



Immunohistochemical analysis of formalin-fixed, paraffin-embedded human liver carcinoma using Anti-Cathepsin K Antibody [CTSK/2791].



Immunohistochemical analysis of formalin-fixed, paraffin-embedded human liver using Anti-Cathepsin K Antibody [CTSK/2791].



Immunohistochemical analysis of formalin-fixed, paraffin-embedded human liver using Anti-Cathepsin K Antibody [CTSK/2791].