

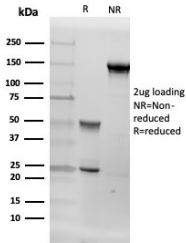
Anti-Aromatase Antibody [CYP19A1/4257] (A248315)

Specifications:

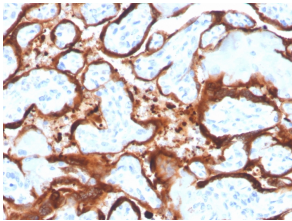
Name:	Anti-Aromatase Antibody [CYP19A1/4257]
Description:	Mouse monoclonal [CYP19A1/4257] antibody to Aromatase.
Applications:	ELISA, WB, IHC-P
Recommended Dilutions:	WB: 1-2 µg/ml, IHC-P: 1-2 µg/ml
Reactivity:	Human
Immunogen:	Synthetic peptide corresponding to amino acids 376-390 of human Aromatase protein.
Sequence:	KALEDDVIGYPVKK
Host:	Mouse
Clonality:	Monoclonal
Clone ID:	CYP19A1/4257
Isotype:	IgG2a
Conjugate:	Unconjugated
Purification:	Protein A/G chromatography.
Concentration:	200 µg/ml
Product Form:	Liquid
Formulation:	Supplied in 10mM Phosphate Buffered Saline with 0.05% BSA and 0.05% Sodium Azide.
Storage:	Shipped at 4°C. Upon delivery aliquot and store at -20°C. Avoid freeze / thaw cycles.
General Notes:	This monoclonal antibody is also available in a different formulation without BSA and Sodium Azide - Anti-Aromatase Antibody [CYP19A1/4257] - BSA and Azide free (A251497).
Disclaimer:	This product is for research use only. It is not intended for diagnostic or therapeutic use.

Anti-Aromatase Antibody [CYP19A1/4257] (A248315)

Images:



SDS-PAGE analysis of Anti-Aromatase Antibody [CYP19A1/4257] under non-reduced and reduced conditions; showing intact IgG and intact heavy and light chains, respectively. SDS-PAGE analysis confirms the integrity and purity of the antibody.



Immunohistochemical analysis of formalin-fixed, paraffin-embedded human placenta using Anti-Aromatase Antibody [CYP19A1/4257].