

Anti-EIF2S1 Antibody [PCRP-EIF2S1-1E2] (A248414)

Specifications:

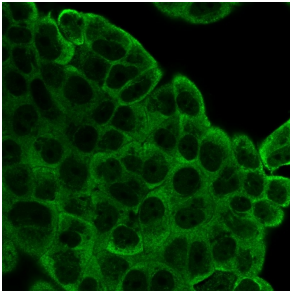
Name:	Anti-EIF2S1 Antibody [PCRP-EIF2S1-1E2]
Description:	Mouse monoclonal [PCRP-EIF2S1-1E2] antibody to EIF2S1.
Specificity:	The initiation of protein synthesis in eukaryotic cells is regulated by interactions between protein initiation factors and RNA molecules. The eukaryotic initiation complex is composed of three subunits, designated eIF2a, eIF2band eIF2g (eukaryotic translation initiation factor 2 a, band g, respectively), all of which work in concert to form a ternary complex with GTP and tRNA in the early stages of protein synthesis. eIF2a, also known as EIF2S1 or EIF2, is a 315 amino acid subunit of the eukaryotic initiation complex that functions to bind tRNA to the 40S ribosomal subunit (in a GTP-dependent manner), thereby initiating translation. In addition, the phosphorylation state of eIF2a controls the rate of tRNA translation. When eIF2a is not phosphorylated, translation occurs at a normal rate. However, upon phosphorylation by one of several kinases, eIF2a is stabilized, thus preventing the GDP/GTP exchange reaction and slowing translation.
Applications:	Flow Cytometry, IF, WB
Recommended Dilutions:	Flow Cytometry: 1-2 µg/million cells, IF: 1-2 µg/ml, WB: 1-2 µg/ml
Reactivity:	Human
Cross Reactivity:	This antibody is predicted to cross react with Rat and Zebrafish.
Immunogen:	Recombinant full-length human EIF2S1 protein.
Host:	Mouse
Clonality:	Monoclonal
Clone ID:	PCRP-EIF2S1-1E2
Isotype:	IgG1
Conjugate:	Unconjugated
Purification:	Protein A/G chromatography.
Concentration:	200 µg/ml
Product Form:	Liquid
Formulation:	Supplied in 10mM Phosphate Buffered Saline with 0.05% BSA and 0.05% Sodium Azide.
Storage:	Shipped at 4°C. Upon delivery aliquot and store at -20°C. Avoid freeze / thaw cycles.

Anti-EIF2S1 Antibody [PCRP-EIF2S1-1E2] (A248414)

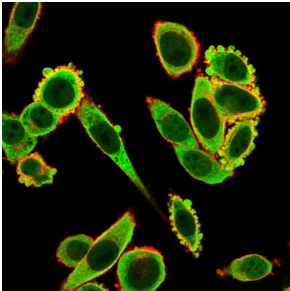
Specifications continued:

General Notes:	This monoclonal antibody is also available in a different formulation without BSA and Sodium Azide - Anti-EIF2S1 Antibody [PCRP-EIF2S1-1E2] - BSA and Azide free (A251596).
Disclaimer:	This product is for research use only. It is not intended for diagnostic or therapeutic use.

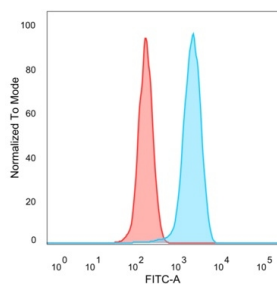
Images:



Immunofluorescent analysis of PFA fixed MCF-7 cells stained with Anti-EIF2S1 Antibody [PCRP-EIF2S1-1E2] followed by Goat Anti-Mouse IgG (CF® 488) (Green).



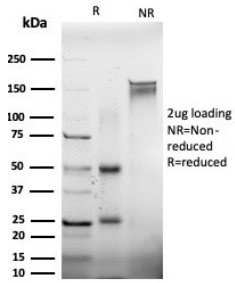
Immunofluorescent analysis of PFA fixed HeLa cells stained with Anti-EIF2S1 Antibody [PCRP-EIF2S1-1E2] followed by Goat Anti-Mouse IgG (CF® 488) (Green). Counterstain is Phalloidin.



Flow cytometric analysis of PFA fixed HeLa cells using Anti-EIF2S1 Antibody [PCRP-EIF2S1-1E2] followed by Goat Anti-Mouse IgG (CF® 488) (Blue). Isotype Control (Red).

Anti-EIF2S1 Antibody [PCRP-EIF2S1-1E2] (A248414)

Images continued:



SDS-PAGE analysis of Anti-EIF2S1 Antibody [PCRP-EIF2S1-1E2] under non-reduced and reduced conditions; showing intact IgG and intact heavy and light chains, respectively. SDS-PAGE analysis confirms the integrity and purity of the antibody.