

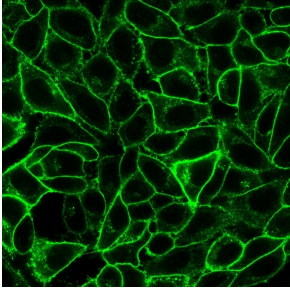
## Anti-CD105 Antibody [ENG/1621] (A248433)

### Specifications:

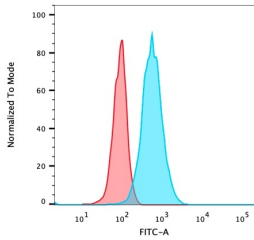
|                        |   |
|------------------------|---|
| Name:                  | Anti-CD105 Antibody [ENG/1621]  |
| Description:           | Mouse monoclonal [ENG/1621] antibody to CD105.  |
| Specificity:           | This antibody is a specific and sensitive marker for tumor angiogenesis as it labels only newly-formed blood vessels and may serve as a prognostic marker for Prostate Adenocarcinoma, and cancers of the lung, stomach, breast, and brain. |
| Applications:          | ELISA, Functional Studies, Flow Cytometry, IF   |
| Recommended Dilutions: | Flow Cytometry: 1-2 µg/million cells, IF: 2-4 µg/ml   |
| Reactivity:            | Human, Monkey, Horse, Porcine, Rat  |
| Immunogen:             | Recombinant extracellular fragment of human Endoglin protein. The exact sequence is proprietary.  |
| Host:                  | Mouse   |
| Clonality:             | Monoclonal  |
| Clone ID:              | ENG/1621  |
| Isotype:               | IgG1  |
| Light Chains:          | kappa   |
| Conjugate:             | Unconjugated  |
| Purification:          | Protein A/G chromatography.   |
| Concentration:         | 200 µg/ml   |
| Product Form:          | Liquid  |
| Formulation:           | Supplied in 10mM Phosphate Buffered Saline with 0.05% BSA and 0.05% Sodium Azide.   |
| Storage:               | Shipped at 4°C. Upon delivery aliquot and store at -20°C. Avoid freeze / thaw cycles.   |
| General Notes:         | This monoclonal antibody is also available in a different formulation without BSA and Sodium Azide - Anti-CD105 Antibody [ENG/1621] - BSA and Azide free (A251615).   |
| Disclaimer:            | This product is for research use only. It is not intended for diagnostic or therapeutic use.  |

# Anti-CD105 Antibody [ENG/1621] (A248433)

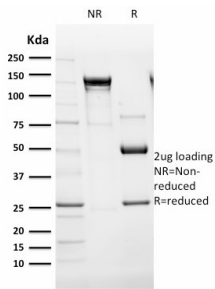
## Images:



Immunofluorescent analysis of PFA fixed HeLa cells stained with Anti-CD105 Antibody [ENG/1621] followed by Goat Anti-Mouse IgG (CF® 488) (Green).



Flow cytometric analysis of trypsinized PFA fixed HeLa cells using Anti-CD105 Antibody [ENG/1621] followed by Goat Anti-Mouse IgG (CF® 488) (Blue). Isotype Control (Red).



SDS-PAGE analysis of Anti-CD105 Antibody [ENG/1621] under non-reduced and reduced conditions; showing intact IgG and intact heavy and light chains, respectively. SDS-PAGE analysis confirms the integrity and purity of the antibody.