

Anti-MelanA Antibody [M2-9E3] (A248556)

Specifications:

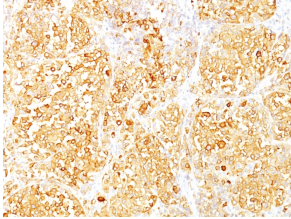
Name:	Anti-MelanA Antibody [M2-9E3]
Description:	Mouse monoclonal [M2-9E3] antibody to MelanA.
Specificity:	This antibody recognizes a protein doublet of 20-22kDa, identified as MART-1 (Melanoma Antigen Recognized by T cells 1) or Melan-A. MART-1 is a newly identified melanocyte differentiation antigen recognized by autologous cytotoxic T lymphocytes. Seven other melanoma associated antigens recognized by autologous cytotoxic T cells include MAGE-1, MAGE-3, tyrosinase, gp100, gp75, BAGE-1, and GAGE-1. Subcellular fractionation shows that MART-1 is present in melanosomes and endoplasmic reticulum. This MAb labels melanomas and other tumors showing melanocytic differentiation. It is also a useful positive-marker for angiomyolipomas. It does not stain tumor cells of epithelial, lymphoid, glial, or mesenchymal origin.
Applications:	Flow Cytometry, IF, WB, IHC-P
Recommended Dilutions:	Flow Cytometry: 1-2 µg/million cells, IF: 1-2 µg/ml, WB: 1-2 µg/ml, IHC-P: 1-2 µg/ml
Reactivity:	Human, Mouse, Rat
Immunogen:	Recombinant human MART-1 protein.
Host:	Mouse
Clonality:	Monoclonal
Clone ID:	M2-9E3
Isotype:	IgG2b
Light Chains:	kappa
Conjugate:	Unconjugated
Purification:	Protein A/G chromatography.
Concentration:	200 µg/ml
Product Form:	Liquid
Formulation:	Supplied in 10mM Phosphate Buffered Saline with 0.05% BSA and 0.05% Sodium Azide.
Storage:	Shipped at 4°C. Upon delivery aliquot and store at -20°C. Avoid freeze / thaw cycles.
General Notes:	This monoclonal antibody is also available in a different formulation without BSA and Sodium Azide - Anti-MelanA Antibody [M2-9E3] - BSA and Azide free (A251738).

Anti-MelanA Antibody [M2-9E3] (A248556)

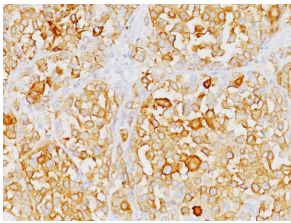
Specifications continued:

Disclaimer: This product is for research use only. It is not intended for diagnostic or therapeutic use.

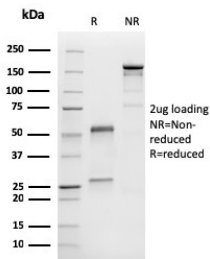
Images:



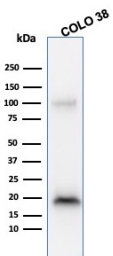
Immunohistochemical analysis of formalin-fixed, paraffin-embedded human melanoma using Anti-MelanA Antibody [M2-9E3].



Immunohistochemical analysis of formalin-fixed, paraffin-embedded human melanoma using Anti-MelanA Antibody [M2-9E3].



SDS-PAGE analysis of Anti-MelanA Antibody [M2-9E3] under non-reduced and reduced conditions; showing intact IgG and intact heavy and light chains, respectively. SDS-PAGE analysis confirms the integrity and purity of the antibody.



Western blot analysis of COLO-38 cell lysate using Anti-MelanA Antibody [M2-9E3].