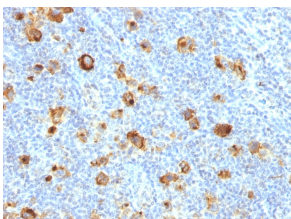


## Anti-CD15 Antibody [FUT4/1478R] (A248671)

### Specifications:

Name:	Anti-CD15 Antibody [FUT4/1478R]
Description:	Recombinant rabbit monoclonal [FUT4/1478R] antibody to CD15.
Applications:	Flow Cytometry, IF, IHC-P
Recommended Dilutions:	Flow Cytometry: 1-2 µg/million cells, IF: 1-2 µg/ml, IHC-P: 1-2 µg/ml
Reactivity:	Human, Mouse, Rat
Immunogen:	Recombinant full-length human CD15 protein.
Host:	Rabbit
Clonality:	Monoclonal
Clone ID:	FUT4/1478R
Isotype:	IgG
Conjugate:	Unconjugated
Purification:	Protein A chromatography.
Concentration:	200 µg/ml
Product Form:	Liquid
Formulation:	Supplied in 10mM Phosphate Buffered Saline with 0.05% BSA and 0.05% Sodium Azide.
Storage:	Shipped at 4°C. Upon delivery aliquot and store at -20°C. Avoid freeze / thaw cycles.
General Notes:	This monoclonal antibody is also available in a different formulation without BSA and Sodium Azide - Anti-CD15 Antibody [FUT4/1478R] - BSA and Azide free (A251853).
Disclaimer:	This product is for research use only. It is not intended for diagnostic or therapeutic use.

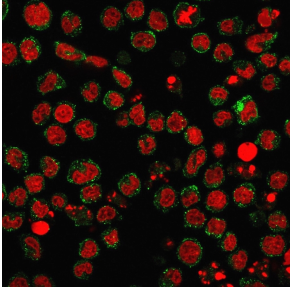
### Images:



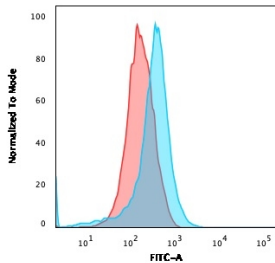
Immunohistochemical analysis of formalin-fixed, paraffin-embedded human Hodgkin's lymphoma using Anti-CD15 Antibody [FUT4/1478R].

## Anti-CD15 Antibody [FUT4/1478R] (A248671)

Images continued:



Immunofluorescent analysis of U937 cells stained with Anti-CD15 Antibody [FUT4/1478R] followed by Goat Anti-Mouse IgG (CF@ 488) (Green). Nuclei are stained with RedDot.



Flow cytometric analysis of U937 cells using Anti-CD15 Antibody [FUT4/1478R] followed by Goat Anti-Rabbit IgG (CF@ 488) (Blue). Isotype Control (Red).