

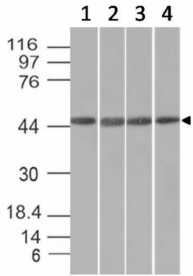
Anti-EMI1 Antibody [EMI1/1176] (A248700)

Specifications:

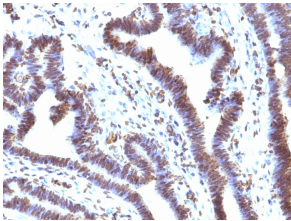
Name:	Anti-EMI1 Antibody [EMI1/1176]
Description:	Mouse monoclonal [EMI1/1176] antibody to EMI1.
Applications:	WB, IHC-P
Recommended Dilutions:	WB: 1-2 µg/ml, IHC-P: 1-2 µg/ml
Reactivity:	Human
Immunogen:	Recombinant fragment, 203 amino acid residues between amino acids 1-250, of human EMI1 protein. The exact sequence is proprietary.
Host:	Mouse
Clonality:	Monoclonal
Clone ID:	EMI1/1176
Isotype:	IgG2a
Light Chains:	kappa
Conjugate:	Unconjugated
Purification:	Protein A/G chromatography.
Concentration:	200 µg/ml
Product Form:	Liquid
Formulation:	Supplied in 10mM Phosphate Buffered Saline with 0.05% BSA and 0.05% Sodium Azide.
Storage:	Shipped at 4°C. Upon delivery aliquot and store at -20°C. Avoid freeze / thaw cycles.
General Notes:	This monoclonal antibody is also available in a different formulation without BSA and Sodium Azide - Anti-EMI1 Antibody [EMI1/1176] - BSA and Azide free (A251882).
Disclaimer:	This product is for research use only. It is not intended for diagnostic or therapeutic use.

Anti-EMI1 Antibody [EMI1/1176] (A248700)

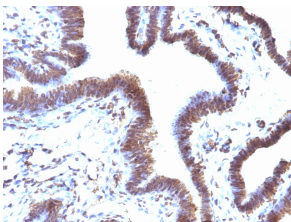
Images:



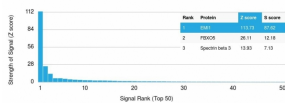
Western blot analysis of HeLa, HepG2, HEK293, and K562 cell lysates using Anti-EMI1 Antibody [EMI1/1176].



Immunohistochemical analysis of formalin-fixed, paraffin-embedded human ovarian carcinoma using Anti-EMI1 Antibody [EMI1/1176].



Immunohistochemical analysis of formalin-fixed, paraffin-embedded human ovarian carcinoma using Anti-EMI1 Antibody [EMI1/1176].



Analysis of protein array containing more than 19,000 full-length human proteins using Anti-EMI1 Antibody [EMI1/1176]. Z-Score and S-Score: The Z-score represents the strength of a signal that a monoclonal antibody (MAb) (in combination with a fluorescently-tagged anti-IgG secondary antibody) produces when binding to a particular protein on the HuProt™ array. Z-scores are described in units of standard deviations (SD's) above the mean value of all signals generated on that array. If targets on HuProt™ are arranged in descending order of the Z-score, the S-score is the difference (also in units of SD's) between the Z-score. S-score therefore represents the relative target specificity of a MAb to its intended target; a MAb is considered to be specific to its intended target, if the MAb has an S-score of at least 2.5. For example, if a MAb binds to protein X with a Z-score of 43 and to protein Y with a Z-score of 14, then the S-score for the binding of that MAb to protein X is equal to 29.