

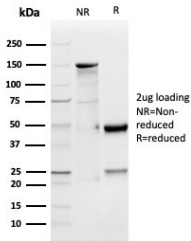
## Anti-GDF9 Antibody [GDF9/4261] (A248703)

### Specifications:

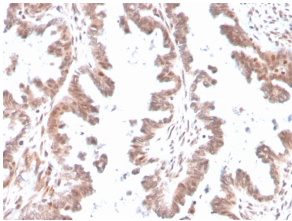
Name:	Anti-GDF9 Antibody [GDF9/4261]
Description:	Mouse monoclonal [GDF9/4261] antibody to GDF9.
Specificity:	This antibody can be used in assays to detect oocyte expression and has been shown to neutralize GDF9 biological activity.
Applications:	ELISA, WB, IHC-P
Recommended Dilutions:	WB: 1-2 µg/ml, IHC-P: 1-2 µg/ml
Reactivity:	Human
Immunogen:	Tuberculin coupled peptide that recognizes an epitope with the EPDG sequence near the C terminal region of human GDF9 protein.
Sequence:	VPAKYSPLSVLTIEPDGSIAYKEYEDMIATKC
Host:	Mouse
Clonality:	Monoclonal
Clone ID:	GDF9/4261
Isotype:	IgG1
Conjugate:	Unconjugated
Purification:	Protein A/G chromatography.
Concentration:	200 µg/ml
Product Form:	Liquid
Formulation:	Supplied in 10mM Phosphate Buffered Saline with 0.05% BSA and 0.05% Sodium Azide.
Storage:	Shipped at 4°C. Upon delivery aliquot and store at -20°C. Avoid freeze / thaw cycles.
General Notes:	This monoclonal antibody is also available in a different formulation without BSA and Sodium Azide - Anti-GDF9 Antibody [GDF9/4261] - BSA and Azide free (A251885).
Disclaimer:	This product is for research use only. It is not intended for diagnostic or therapeutic use.

## Anti-GDF9 Antibody [GDF9/4261] (A248703)

### Images:



SDS-PAGE analysis of Anti-GDF9 Antibody [GDF9/4261] under non-reduced and reduced conditions; showing intact IgG and intact heavy and light chains, respectively. SDS-PAGE analysis confirms the integrity and purity of the antibody.



Immunohistochemical analysis of formalin-fixed, paraffin-embedded human ovary using Anti-GDF9 Antibody [GDF9/4261].