

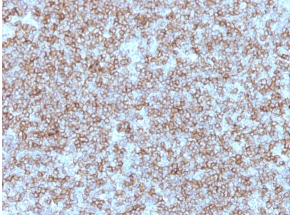
## Anti-HLA DP + DR Antibody [Bra-14] (A248840)

### Specifications:

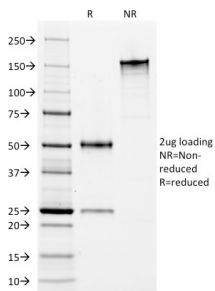
Name:	Anti-HLA DP + DR Antibody [Bra-14]
Description:	Mouse monoclonal [Bra-14] antibody to HLA DP + DR.
Specificity:	This antibody reacts with a common epitope of human major histocompatibility (MHC) class II antigens: HLA DP and HLA DR.
Applications:	Flow Cytometry, IF, IHC-P
Recommended Dilutions:	Flow Cytometry: 1-2 µg/million cells, IF: 1-2 µg/ml, IHC-P: 1-2 µg/ml
Reactivity:	Human
Immunogen:	Human REH cells.
Host:	Mouse
Clonality:	Monoclonal
Clone ID:	Bra-14
Isotype:	IgG3
Light Chains:	kappa
Conjugate:	Unconjugated
Purification:	Protein A/G chromatography.
Concentration:	200 µg/ml
Product Form:	Liquid
Formulation:	Supplied in 10mM Phosphate Buffered Saline with 0.05% BSA and 0.05% Sodium Azide.
Storage:	Shipped at 4°C. Store at 4°C.
General Notes:	This monoclonal antibody is also available in a different formulation without BSA and Sodium Azide - Anti-HLA DP + DR Antibody [Bra-14] - BSA and Azide free (A252020).
Disclaimer:	This product is for research use only. It is not intended for diagnostic or therapeutic use.

## Anti-HLA DP + DR Antibody [Bra-14] (A248840)

### Images:



Immunohistochemical analysis of formalin-fixed, paraffin-embedded human tonsil using Anti-HLA DP + DR Antibody [Bra-14].



SDS-PAGE analysis of Anti-HLA DP + DR Antibody [Bra-14] under non-reduced and reduced conditions; showing intact IgG and intact heavy and light chains, respectively. SDS-PAGE analysis confirms the integrity and purity of the antibody.