

Anti-Interferon alpha 2 Antibody [N39] (A248920)

Specifications:

Name:	Anti-Interferon alpha 2 Antibody [N39]
Description:	Mouse monoclonal [N39] antibody to Interferon alpha 2.
Specificity:	This antibody recognizes a protein of 16-27kDa, identified as human interferon-II) (IFN-(II). Its epitope maps between aa112-148 of IFN-II) (total aa172). This MAb is specific for IFN-(II) and does not cross-react with IFN-(I). The site recognized by this MAb is called site I and is responsible for the antiviral and anti-proliferative activities of IFN-(II). Epitopes of N27 and N39 MAbs are different and represent a good combination of antibodies to set up an ELISA assay for the quantitation of IFN-(II) after viral infections. The IFN- family consists of 24 or more genes or pseudo-genes. IFN-II) is one of the two distinct families (I and II) of human IFN-. The -interferon are mainly produced by lymphocytes, monocytes, macrophages, and cell lines such as Namalwa and KG1 following induction by viruses, nucleic acids, and glucocorticoid hormones. They are involved in virus resistance on target cells, inhibition of cell proliferation, induction of cytokines and regulation of expression of MHC class I antigens.
Applications:	ELISA, Flow Cytometry, IF
Recommended Dilutions:	Flow Cytometry: 1-2 µg/million cells, IF: 1-2 µg/ml
Reactivity:	Human
Immunogen:	Recombinant human IFN alpha 2.
Host:	Mouse
Clonality:	Monoclonal
Clone ID:	N39
Isotype:	IgG1
Light Chains:	kappa
Conjugate:	Unconjugated
Purification:	Protein A/G chromatography.
Concentration:	200 µg/ml
Product Form:	Liquid
Formulation:	Supplied in 10mM Phosphate Buffered Saline with 0.05% BSA and 0.05% Sodium Azide.
Storage:	Shipped at 4°C. Upon delivery aliquot and store at -20°C. Avoid freeze / thaw cycles.

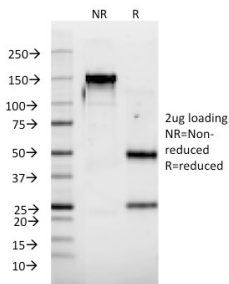
Anti-Interferon alpha 2 Antibody [N39] (A248920)

Specifications continued:

General Notes: This monoclonal antibody is also available in a different formulation without BSA and Sodium Azide - Anti-Interferon alpha 2 Antibody [N39] - BSA and Azide free (A252100).

Disclaimer: This product is for research use only. It is not intended for diagnostic or therapeutic use.

Images:



SDS-PAGE analysis of Anti-Interferon alpha 2 Antibody [N39] under non-reduced and reduced conditions; showing intact IgG and intact heavy and light chains, respectively. SDS-PAGE analysis confirms the integrity and purity of the antibody.