

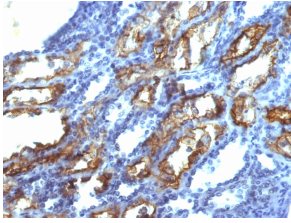
Anti-Interferon gamma Antibody [IFNG/466] (A248925)

Specifications:

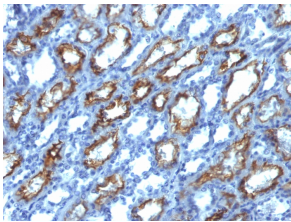
Name:	Anti-Interferon gamma Antibody [IFNG/466]
Description:	Mouse monoclonal [IFNG/466] antibody to Interferon gamma.
Applications:	IHC-P
Recommended Dilutions:	IHC-P: 1-2 µg/ml
Reactivity:	Human
Immunogen:	Recombinant full-length human IFNG protein.
Host:	Mouse
Clonality:	Monoclonal
Clone ID:	IFNG/466
Isotype:	IgG2b
Light Chains:	kappa
Conjugate:	Unconjugated
Purification:	Protein A/G chromatography.
Concentration:	200 µg/ml
Product Form:	Liquid
Formulation:	Supplied in 10mM Phosphate Buffered Saline with 0.05% BSA and 0.05% Sodium Azide.
Storage:	Shipped at 4°C. Upon delivery aliquot and store at -20°C. Avoid freeze / thaw cycles.
General Notes:	This monoclonal antibody is also available in a different formulation without BSA and Sodium Azide - Anti-Interferon gamma Antibody [IFNG/466] - BSA and Azide free (A252105).
Disclaimer:	This product is for research use only. It is not intended for diagnostic or therapeutic use.

Anti-Interferon gamma Antibody [IFNG/466] (A248925)

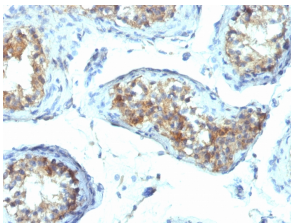
Images:



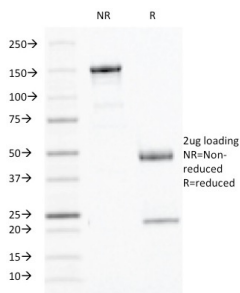
Immunohistochemical analysis of formalin-fixed, paraffin-embedded human renal cell carcinoma using Anti-Interferon gamma Antibody [IFNG/466].



Immunohistochemical analysis of formalin-fixed, paraffin-embedded human renal cell carcinoma using Anti-Interferon gamma Antibody [IFNG/466].



Immunohistochemical analysis of formalin-fixed, paraffin-embedded human testicular carcinoma using Anti-Interferon gamma Antibody [IFNG/466].



SDS-PAGE analysis of Anti-Interferon gamma Antibody [IFNG/466] under non-reduced and reduced conditions; showing intact IgG and intact heavy and light chains, respectively. SDS-PAGE analysis confirms the integrity and purity of the antibody.