

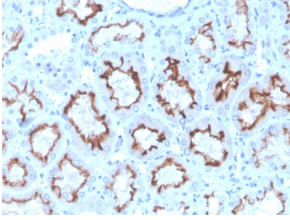
Anti-Interferon gamma Antibody [rIFNG/4467] (A248927)

Specifications:

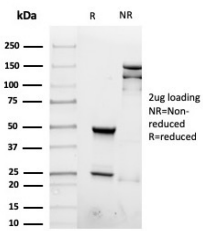
Name:	Anti-Interferon gamma Antibody [rIFNG/4467]
Description:	Recombinant mouse monoclonal [rIFNG/4467] antibody to Interferon gamma.
Specificity:	This antibody recognizes a protein of 20-25kDa, identified as human interferon. This MAb is specific to human IFN- (type I interferon).
Applications:	IHC-P
Recommended Dilutions:	IHC-P: 1-2 µg/ml
Reactivity:	Human
Immunogen:	Recombinant full-length human IFNG protein.
Host:	Mouse
Clonality:	Monoclonal
Clone ID:	rIFNG/4467
Isotype:	IgG2a
Light Chains:	kappa
Conjugate:	Unconjugated
Purification:	Protein A/G chromatography.
Concentration:	200 µg/ml
Product Form:	Liquid
Formulation:	Supplied in 10mM Phosphate Buffered Saline with 0.05% BSA and 0.05% Sodium Azide.
Storage:	Shipped at 4°C. Upon delivery aliquot and store at -20°C. Avoid freeze / thaw cycles.
General Notes:	This monoclonal antibody is also available in a different formulation without BSA and Sodium Azide - Anti-Interferon gamma Antibody [rIFNG/4467] - BSA and Azide free (A252107).
Disclaimer:	This product is for research use only. It is not intended for diagnostic or therapeutic use.

Anti-Interferon gamma Antibody [rIFNG/4467] (A248927)

Images:



Immunohistochemical analysis of formalin-fixed, paraffin-embedded human kidney using Anti-Interferon gamma Antibody [rIFNG/4467].



SDS-PAGE analysis of Anti-Interferon gamma Antibody [rIFNG/4467] under non-reduced and reduced conditions; showing intact IgG and intact heavy and light chains, respectively. SDS-PAGE analysis confirms the integrity and purity of the antibody.