

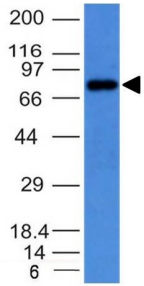
Anti-Human IgM Heavy Chain Antibody [IM373] (A248962)

Specifications:

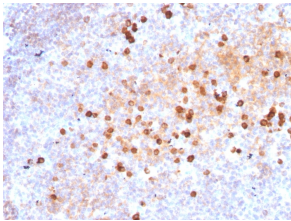
Name:	Anti-Human IgM Heavy Chain Antibody [IM373]
Description:	Mouse monoclonal [IM373] antibody to Human IgM Heavy Chain.
Specificity:	This antibody recognizes a protein of 75kDa, identified as mu heavy chain of human immunoglobulins. It does not cross-react with alpha (IgA), gamma (IgG), epsilon (IgE), or delta (IgD), heavy chains, T-cells, monocytes, granulocytes, or erythrocytes. This MAb is useful in the identification of leukemias, plasmacytomas, and certain non-Hodgkins lymphomas. The most common feature of these malignancies is the restricted expression of a single heavy chain class. Demonstration of clonality in lymphoid infiltrates indicates that the infiltrate is clonal and therefore malignant.
Applications:	Flow Cytometry, IF, WB, IHC-P
Recommended Dilutions:	Flow Cytometry: 1-2 µg/million cells, IF: 1-2 µg/ml, WB: 1-2 µg/ml, IHC-P: 1-2 µg/ml
Reactivity:	Human
Immunogen:	Recombinant full-length heavy chain of human IgM.
Host:	Mouse
Clonality:	Monoclonal
Clone ID:	IM373
Isotype:	IgG2b
Light Chains:	kappa
Conjugate:	Unconjugated
Purification:	Protein A/G chromatography.
Concentration:	200 µg/ml
Product Form:	Liquid
Formulation:	Supplied in 10mM Phosphate Buffered Saline with 0.05% BSA and 0.05% Sodium Azide.
Storage:	Shipped at 4°C. Upon delivery aliquot and store at -20°C. Avoid freeze / thaw cycles.
General Notes:	This monoclonal antibody is also available in a different formulation without BSA and Sodium Azide - Anti-Human IgM Heavy Chain Antibody [IM373] - BSA and Azide free (A252142).
Disclaimer:	This product is for research use only. It is not intended for diagnostic or therapeutic use.

Anti-Human IgM Heavy Chain Antibody [IM373] (A248962)

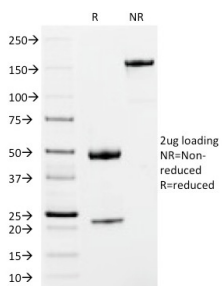
Images:



Western blot analysis of Raji cell lysate using Anti-Human IgM Heavy Chain Antibody [IM373].



Immunohistochemical analysis of formalin-fixed, paraffin-embedded human tonsil using Anti-Human IgM Heavy Chain Antibody [IM373].



SDS-PAGE analysis of Anti-Human IgM Heavy Chain Antibody [IM373] under non-reduced and reduced conditions; showing intact IgG and intact heavy and light chains, respectively. SDS-PAGE analysis confirms the integrity and purity of the antibody.