

Anti-Lambda Light Chain Antibody [HP6054] (A248992)

Specifications:

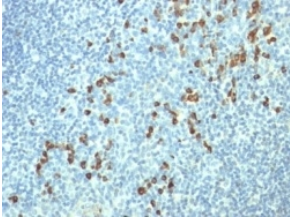
Name:	Anti-Lambda Light Chain Antibody [HP6054]
Description:	Mouse monoclonal [HP6054] antibody to Lambda Light Chain.
Specificity:	This antibody is specific to lambda light chain of immunoglobulin and shows no cross-reaction with lambda light chain or any of the five heavy chains. In mammals, the two light chains in an antibody are always identical, with only one type of light chain, kappa or lambda. The ratio of Kappa to Lambda is 70:30. However, with the occurrence of multiple myeloma or other B-cell malignancies this ratio is disturbed. Antibody to the lambda light chain is reportedly useful in the identification of leukemias, plasmacytomas, and certain non-Hodgkins lymphomas. Demonstration of clonality in lymphoid infiltrates indicates that the infiltrate is malignant.
Applications:	Flow Cytometry, IF, WB, IHC-P
Recommended Dilutions:	Flow Cytometry: 1-2 µg/million cells, IF: 1-2 µg/ml, WB: 1-2 µg/ml, IHC-P: 1-2 µg/ml
Reactivity:	Human
Immunogen:	Purified human IgG myeloma proteins coupled to polyaminostyren microbeads.
Host:	Mouse
Clonality:	Monoclonal
Clone ID:	HP6054
Isotype:	IgG2a
Light Chains:	kappa
Conjugate:	Unconjugated
Purification:	Protein A/G chromatography.
Concentration:	200 µg/ml
Product Form:	Liquid
Formulation:	Supplied in 10mM Phosphate Buffered Saline with 0.05% BSA and 0.05% Sodium Azide.
Storage:	Shipped at 4°C. Upon delivery aliquot and store at -20°C. Avoid freeze / thaw cycles.
General Notes:	This monoclonal antibody is also available in a different formulation without BSA and Sodium Azide - Anti-Lambda Light Chain Antibody [HP6054] - BSA and Azide free (A252172).

Anti-Lambda Light Chain Antibody [HP6054] (A248992)

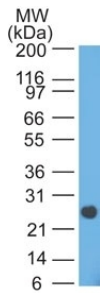
Specifications continued:

Disclaimer: This product is for research use only. It is not intended for diagnostic or therapeutic use.

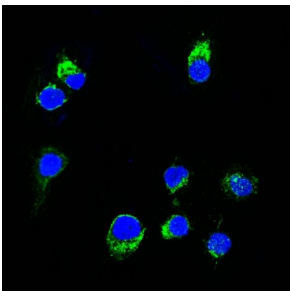
Images:



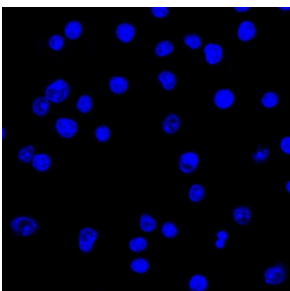
Immunohistochemical analysis of formalin-fixed, paraffin-embedded human tonsil using Anti-Lambda Light Chain Antibody [HP6054].



Western blot analysis of human intestinal lysate using Anti-Lambda Light Chain Antibody [HP6054].



Immunofluorescent analysis of Ramos cells stained with Anti-Lambda Light Chain Antibody [HP6054] (AF488) (Green). DAPI was used to stain the cell nuclei (Blue).



Negative Control: Immunofluorescent analysis of Ramos cells using Mouse IgG2a (AF488) - Isotype Control (Green). DAPI was used to stain the cell nuclei (Blue).