

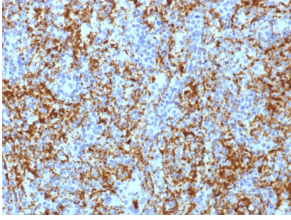
## Anti-Integrin beta 3 Antibody [ITGB3/1713] (A249080)

### Specifications:

Name:	Anti-Integrin beta 3 Antibody [ITGB3/1713]
Description:	Mouse monoclonal [ITGB3/1713] antibody to Integrin beta 3.
Specificity:	This antibody is useful for classification of megakaryoblastic leukemia.
Applications:	IHC
Recommended Dilutions:	IHC: 1-2 µg/ml
Reactivity:	Human
Immunogen:	Recombinant human ITGB3 protein.
Host:	Mouse
Clonality:	Monoclonal
Clone ID:	ITGB3/1713
Isotype:	IgG1
Light Chains:	kappa
Conjugate:	Unconjugated
Purification:	Protein A/G chromatography.
Concentration:	200 µg/ml
Product Form:	Liquid
Formulation:	Supplied in 10mM Phosphate Buffered Saline with 0.05% BSA and 0.05% Sodium Azide.
Storage:	Shipped at 4°C. Upon delivery aliquot and store at -20°C. Avoid freeze / thaw cycles.
General Notes:	This monoclonal antibody is also available in a different formulation without BSA and Sodium Azide - Anti-Integrin beta 3 Antibody [ITGB3/1713] - BSA and Azide free (A252260).
Disclaimer:	This product is for research use only. It is not intended for diagnostic or therapeutic use.

## Anti-Integrin beta 3 Antibody [ITGB3/1713] (A249080)

Images:



Immunohistochemical analysis of formalin-fixed, paraffin-embedded human spleen using Anti-Integrin beta 3 Antibody [ITGB3/1713].