

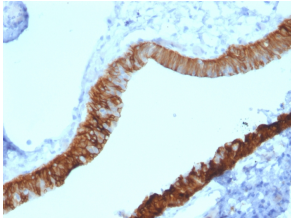
## Anti-Cytokeratin 3 Antibody [KRT3/2130] (A249121)

### Specifications:

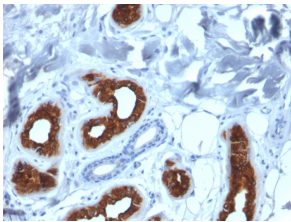
Name:	Anti-Cytokeratin 3 Antibody [KRT3/2130]
Description:	Mouse monoclonal [KRT3/2130] antibody to Cytokeratin 3.
Specificity:	The protein encoded by this gene is a member of the keratin gene family. The type II cytokeratins consist of basic or neutral proteins, which are arranged in pairs of heterotypic keratin chains co-expressed during differentiation of simple and stratified epithelial tissues. This type II cytokeratin is specifically expressed in the corneal epithelium with family member KRT12 and mutations in these genes have been associated with Meesmanns Corneal Dystrophy.
Applications:	IHC-P
Recommended Dilutions:	IHC-P: 1-2 µg/ml
Reactivity:	Human
Immunogen:	Recombinant full-length human KRT3 protein.
Host:	Mouse
Clonality:	Monoclonal
Clone ID:	KRT3/2130
Isotype:	IgG1
Light Chains:	kappa
Conjugate:	Unconjugated
Purification:	Protein A/G chromatography.
Concentration:	200 µg/ml
Product Form:	Liquid
Formulation:	Supplied in 10mM Phosphate Buffered Saline with 0.05% BSA and 0.05% Sodium Azide.
Storage:	Shipped at 4°C. Upon delivery aliquot and store at -20°C. Avoid freeze / thaw cycles.
General Notes:	This monoclonal antibody is also available in a different formulation without BSA and Sodium Azide - Anti-Cytokeratin 3 Antibody [KRT3/2130] - BSA and Azide free (A252301).
Disclaimer:	This product is for research use only. It is not intended for diagnostic or therapeutic use.

# Anti-Cytokeratin 3 Antibody [KRT3/2130] (A249121)

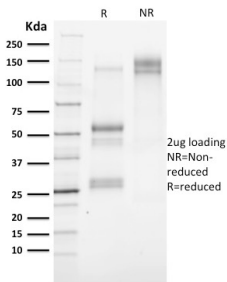
## Images:



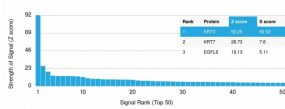
Immunohistochemical analysis of formalin-fixed, paraffin-embedded human ovary using Anti-Cytokeratin 3 Antibody [KRT3/2130].



Immunohistochemical analysis of formalin-fixed, paraffin-embedded human skin using Anti-Cytokeratin 3 Antibody [KRT3/2130].



SDS-PAGE analysis of Anti-Cytokeratin 3 Antibody [KRT3/2130] under non-reduced and reduced conditions; showing intact IgG and intact heavy and light chains, respectively. SDS-PAGE analysis confirms the integrity and purity of the antibody.



Analysis of protein array containing more than 19,000 full-length human proteins using Anti-Cytokeratin 3 Antibody [KRT3/2130]. Z-Score and S-Score: The Z-score represents the strength of a signal that a monoclonal antibody (MAb) (in combination with a fluorescently-tagged anti-IgG secondary antibody) produces when binding to a particular protein on the HuProt™ array. Z-scores are described in units of standard deviations (SD's) above the mean value of all signals generated on that array. If targets on HuProt™ are arranged in descending order of the Z-score, the S-score is the difference (also in units of SD's) between the Z-score. S-score therefore represents the relative target specificity of a MAb to its intended target; a MAb is considered to be specific to its intended target, if the MAb has an S-score of at least 2.5. For example, if a MAb binds to protein X with a Z-score of 43 and to protein Y with a Z-score of 14, then the S-score for the binding of that MAb to protein X is equal to 29.