

Anti-Cytokeratin 6 Antibody [SPM269] (A249128)

Specifications:

| | |
|------------------------|---|
| Name: | Anti-Cytokeratin 6 Antibody [SPM269] |
| Description: | Mouse monoclonal [SPM269] antibody to Cytokeratin 6. |
| Specificity: | This antibody recognizes a protein of 56kDa, identified as cytokeratin 6 (CK6). In humans, multiple isoforms of Cytokeratin 6 (6A-6F), encoded by several highly homologous genes, have distinct tissue expression patterns, and Cytokeratin 6A is the dominant form in epithelial tissue. The gene encoding human Cytokeratin 6A maps to chromosome 12q13, and mutations in this gene are linked to several inheritable hair and skin pathologies. Keratins 6 and 16 are expressed in keratinocytes, which are undergoing rapid turnover in the suprabasal region (also known as hyper-proliferation-related keratins). Keratin 6 is found in hair follicles, suprabasal cells of a variety of internal stratified epithelia, in epidermis, in both normal and hyper-proliferative situations. Epidermal injury results in activation of keratinocytes, which express CK6 and CK16. CK6 is strongly expressed in about 75% of head and neck squamous cell carcinomas. Expression of CK6 is particularly associated with differentiation. |
| Applications: | Flow Cytometry, IF, IHC-P |
| Recommended Dilutions: | Flow Cytometry: 1-2 µg/million cells, IF: 1-2 µg/ml, IHC-P: 1-2 µg/ml |
| Reactivity: | Human, Mouse |
| Immunogen: | Synthetic peptide corresponding to the C terminus of human Keratin 6. |
| Sequence: | GSSTIKYTTTS |
| Host: | Mouse |
| Clonality: | Monoclonal |
| Clone ID: | SPM269 |
| Isotype: | IgG2a |
| Light Chains: | kappa |
| Conjugate: | Unconjugated |
| Purification: | Protein A/G chromatography. |
| Concentration: | 200 µg/ml |
| Product Form: | Liquid |
| Formulation: | Supplied in 10mM Phosphate Buffered Saline with 0.05% BSA and 0.05% Sodium Azide. |
| Storage: | Shipped at 4°C. Upon delivery aliquot and store at -20°C. Avoid freeze / thaw cycles. |

Anti-Cytokeratin 6 Antibody [SPM269] (A249128)

Specifications continued:

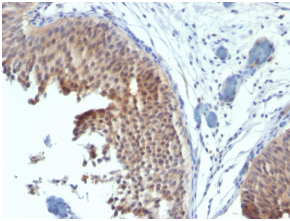
General Notes:

This monoclonal antibody is also available in a different formulation without BSA and Sodium Azide - Anti-Cytokeratin 6 Antibody [SPM269] - BSA and Azide free (A252308).

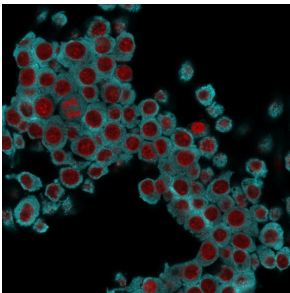
Disclaimer:

This product is for research use only. It is not intended for diagnostic or therapeutic use.

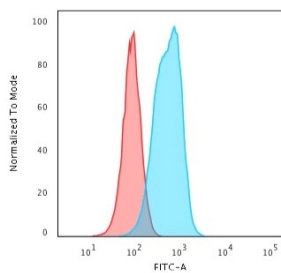
Images:



Immunohistochemical analysis of formalin-fixed, paraffin-embedded human bladder carcinoma using Anti-Cytokeratin 6 Antibody [SPM269].



Immunofluorescent analysis of RAW cells stained with Anti-Cytokeratin 6 Antibody [SPM269] followed by Goat Anti-Mouse IgG (CF® 488) (Cyan). Nuclei are stained with RedDot.



Flow cytometric analysis of RAW cells using Anti-Cytokeratin 6 Antibody [SPM269] followed by Goat Anti-Mouse IgG (CF® 488) (Blue). Isotype Control (Red).